

SETUP Manual for CASTools 3

Version 1.02 - 2015

Computer Aided Survey Tools 3

Computer Aided Survey Tools (CAST3) is a collection of ZWCad routines that simplifies the drafting of professional survey drawings. Together with the range of AutoCAD and ZWCad products, it is a must-have, inexpensive, and highly productive drafting tool for all Land Survey professionals.

Some Feature and Functions

- Selectable plotting scale, text height, decimal selection for area and distance text
- Switching the order of survey bearing and vice versa
- Automatic bearing and distance labeling for lines or polylines.
- Automated drawing of the cutting symbol in ZWCad.
- And many other tools to ease the laborious ways of the past are included

Note – Some Antiviruses software detects the installation file as a virus **THREAT** and blocks the installation.

- The user can over write this AntiVirus scanning by setting the **EXCLUSION** to the C:\CAST directory and the setup file.



Installation Guide Part 1

1 - Create directory called [c:\cast]

2 - Copy [Setup_cast3_v1_02.exe] to directory c:\cast (see Figure 1)

Figure 1



3 - Run [Setup_cast3_v1_02.exe]

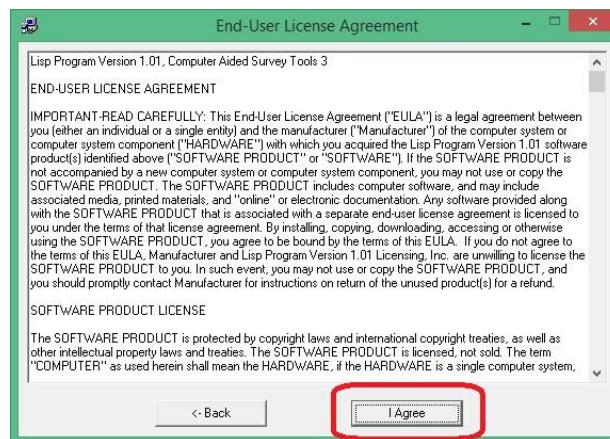
4 - Installing cast dialog box, click [Continue->] (see Figure 2)

Figure 2



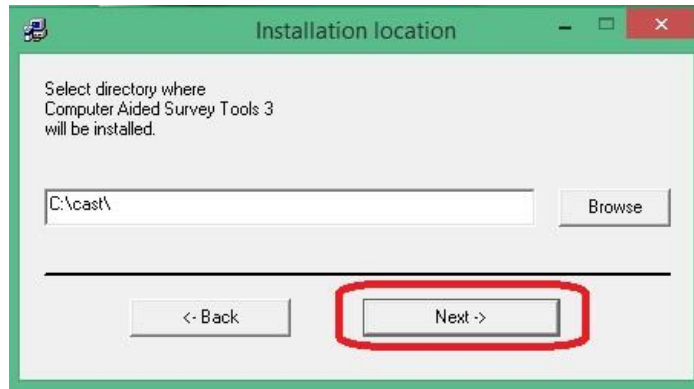
5 - End User License Agreement, click [I Agree] (see Figure 3)

Figure 3



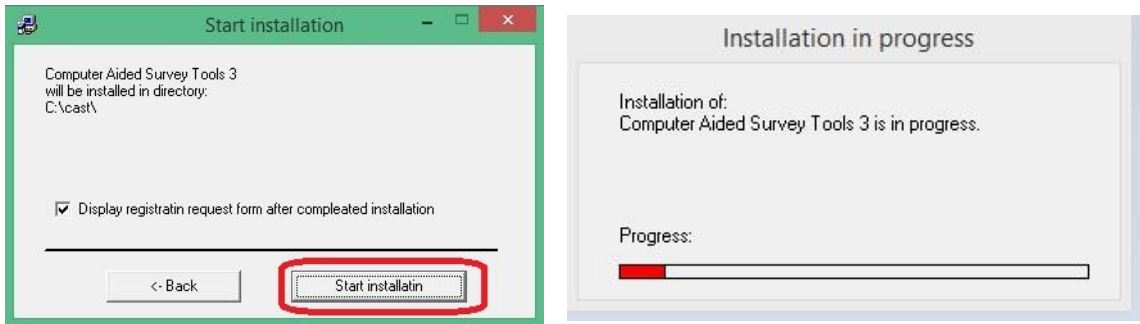
6 - Installation Location, Browse to the directory [C:\cast\], Then click [Next->] (see Figure 4)

Figure 4



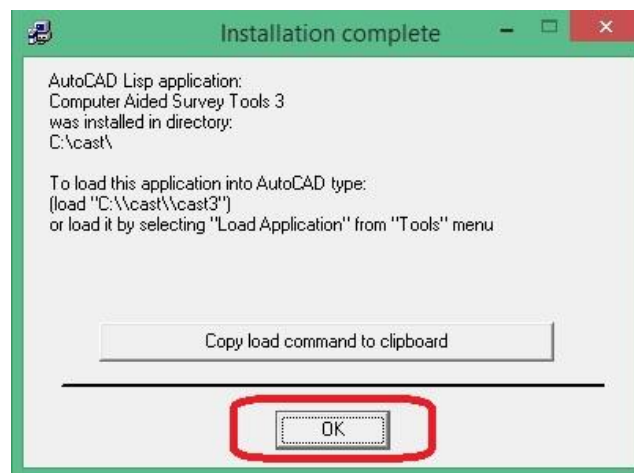
7 - Start installation, click [Start installation] (see Figure 5)

Figure 5



8 - Installation complete, click [OK] (see Figure 6)

Figure 6



- 9 - Registration request form, Registration to the **Company or User's Name**, Then click **[OK]** (see Figure 7)
- WhatsApp the serial no and Register name for Registration Code

Figure 7

Registration request form

Select a request method:

Request by email

Request by Fax

Registration Code will be sent to:

Email address:

Fax number:

Registered to (8 characters minimum):

Method of payment:

By Check Visa Master Discover American Express

Card Number:

Expiration Date: (month/year)

Registration Code Request Form:

Please forward this information to:
Lisp Program Version 1.02
Fax: 03-9221 6900 or Email: support@cadfocus.com.my

Computer Aided Survey Tools 3
From:

Registered to: CADFOCUS
Pay by Check
Serial Number: 16571971

Print Request Form Copy to Clipboard & Start Email OK

- 10 - Exiting registration request form, click **[Yes]** (see Figure 8)

Figure 8

Exit registration request form?

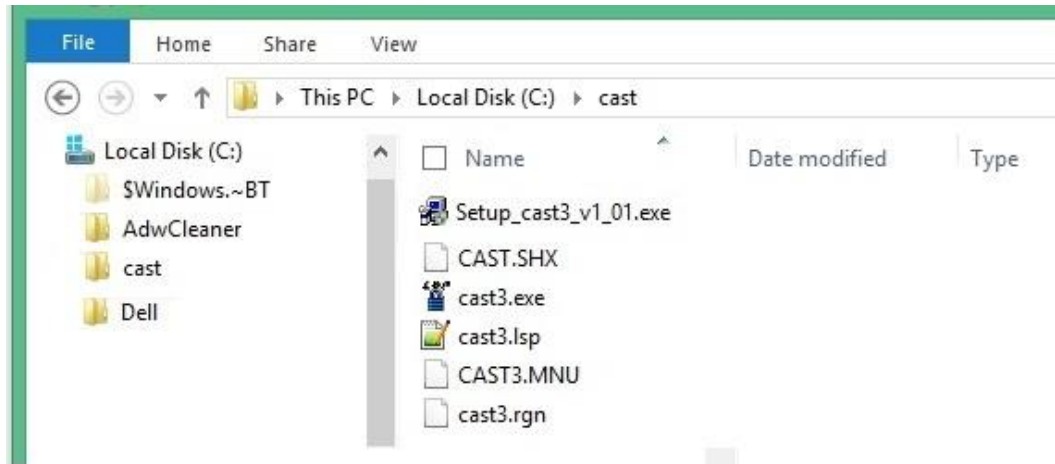
For security reasons Credit card information will not be saved.
You will have to reenter it every time you open this form.

Request form was not printed or emailed!
Exit anyway?

Yes No

11 - Directory C:\cast\ contains new files (see Figure 9)

Figure 9



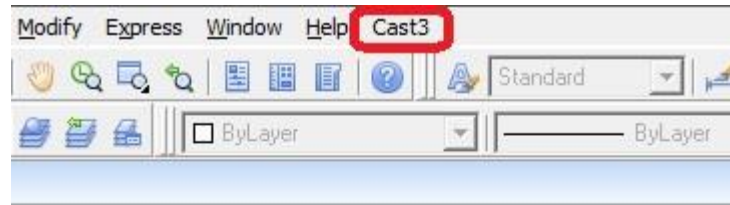
12 - Copy [cast.shx] and paste into ZWCad Font folder
[c:\Program Files (x86)\ZWCAD+ 2015\fonts] (see Figure 10)

Figure 10



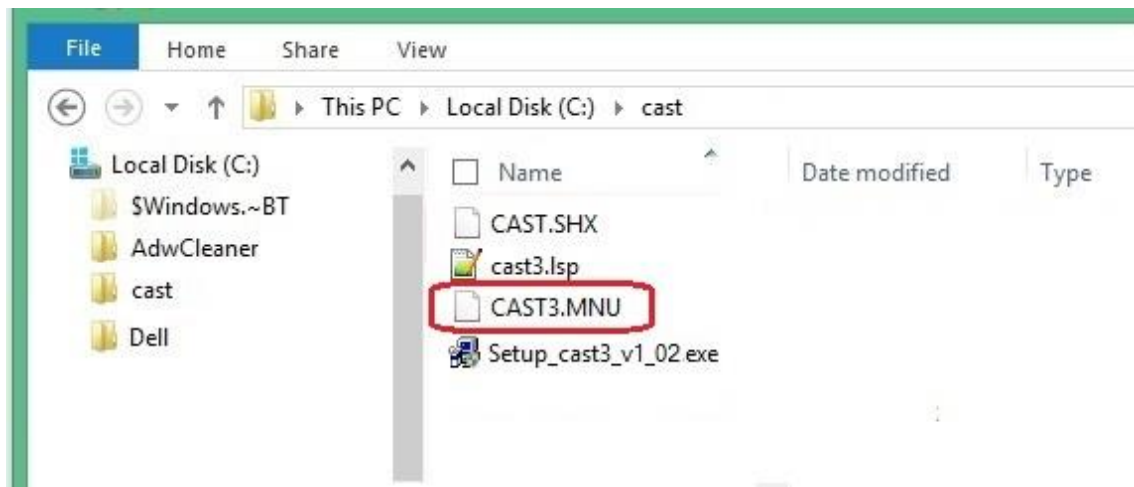
Installation Guide Part 2

How to customise Cast3 menu on ZWcad+ Top Main Menu



- 1 – Check folder C:\CAST\
Contains MENU file [CAST3.MNU]
(see figure 1)

Figure 1



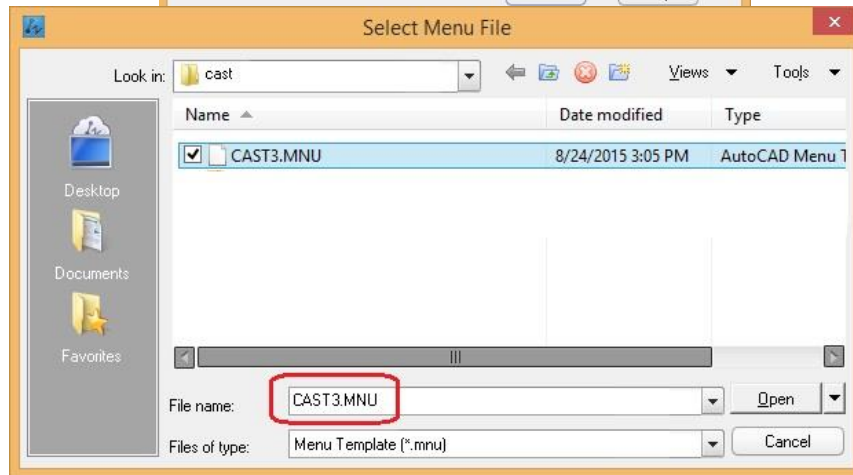
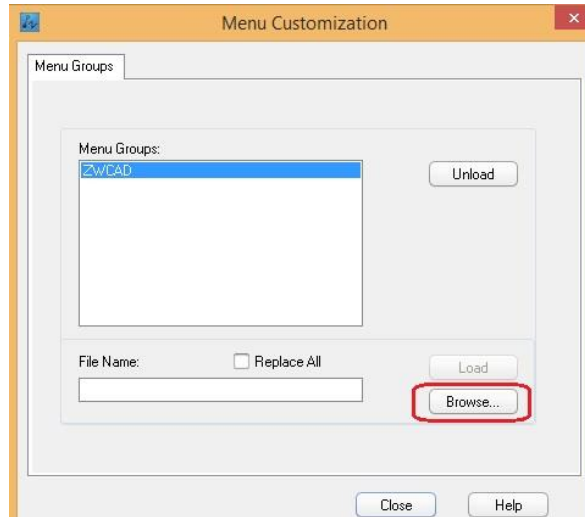
- 2 – Command type [Menuload] (see figure 2)

Figure 2



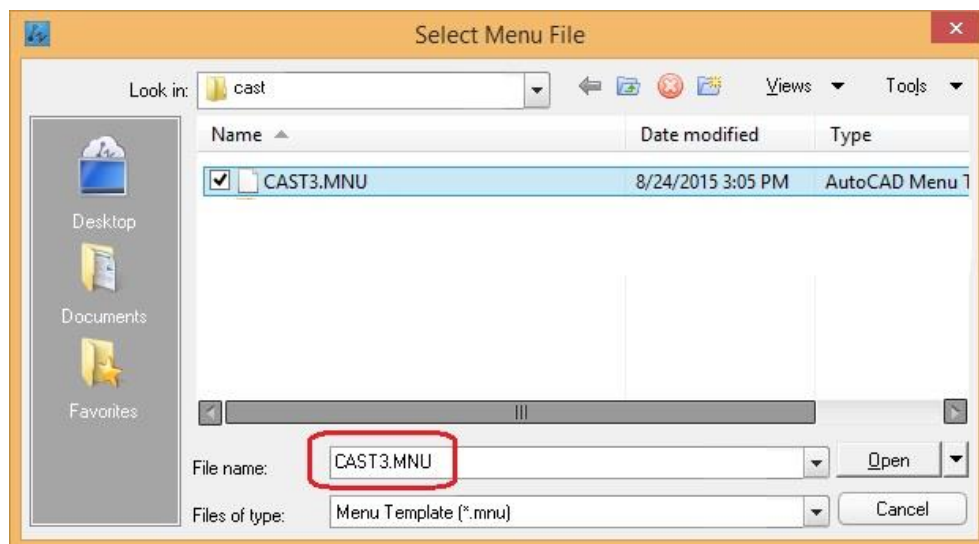
3 - Click the **[Browse]** to locate the CAST3.MNU menu file. (see figure 3)

Figure 3

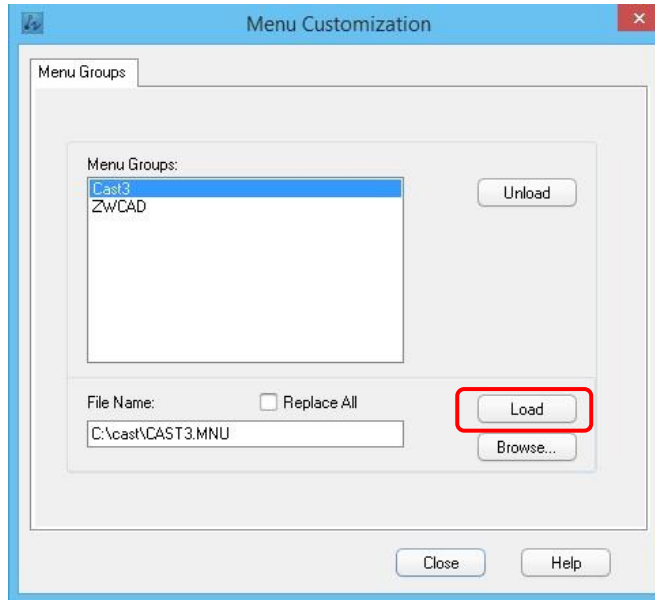


4 - Select menu file in **[C:\cast\cast3.mnu]** directory and click **[Open]** (see figure 4)

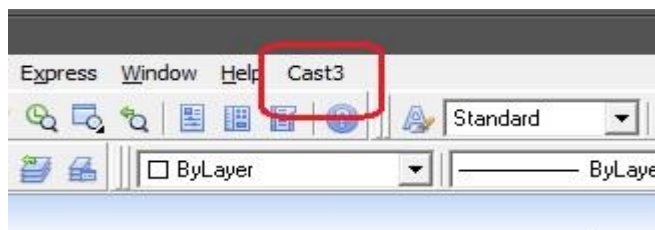
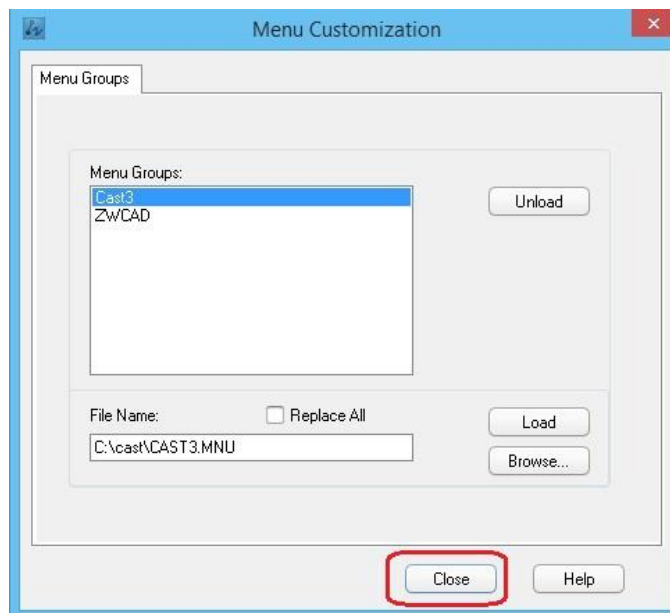
Figure 4



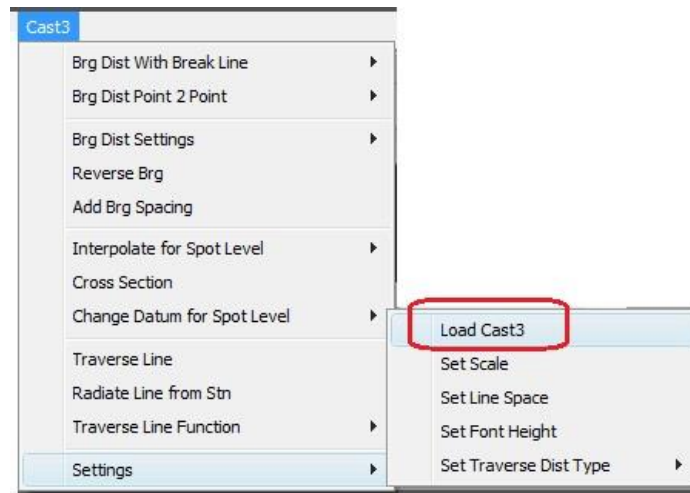
5 – Click the **[Load]** button to load cast3.mnu file to Top Main Menu.



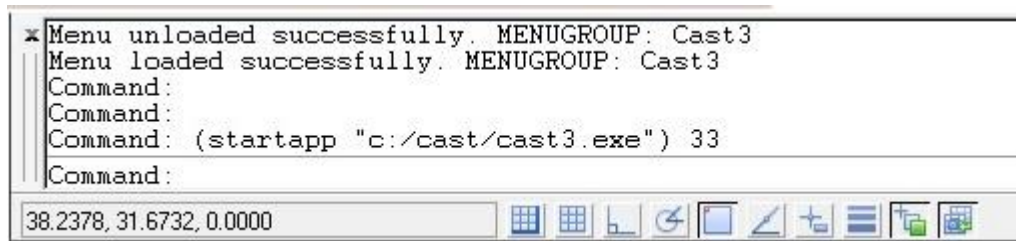
6 – Click the **[Close]** button to Close Menu Customization dialog box.



- 7 – To load the program to memory run [Cast3] menu file. Click the main menu [Cast3], [Setting], [Load Cast3],



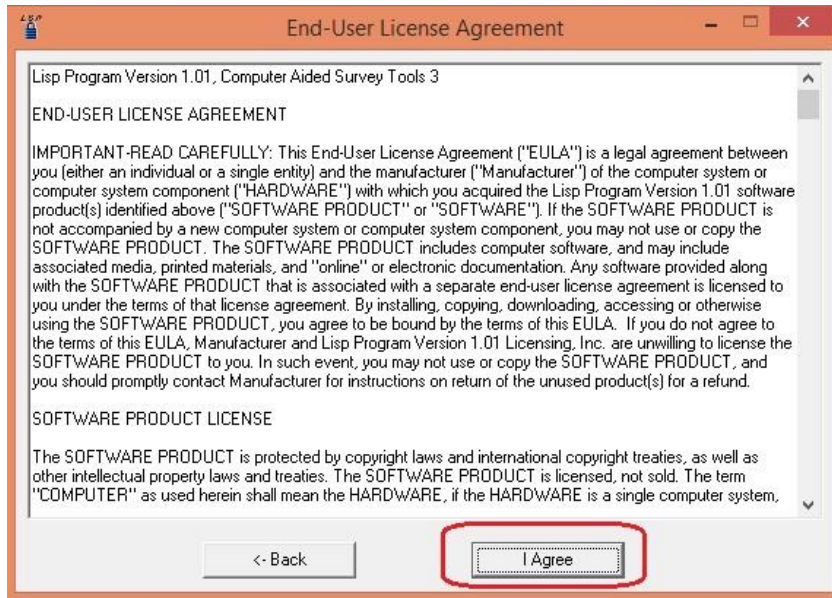
- a) To activate CAST3 for the first time use.
Click the main menu [Cast3], [Setting], [Load Cast3] to register the program to the user.



- 8 - To register Survey Tools, click [Enter registration code]



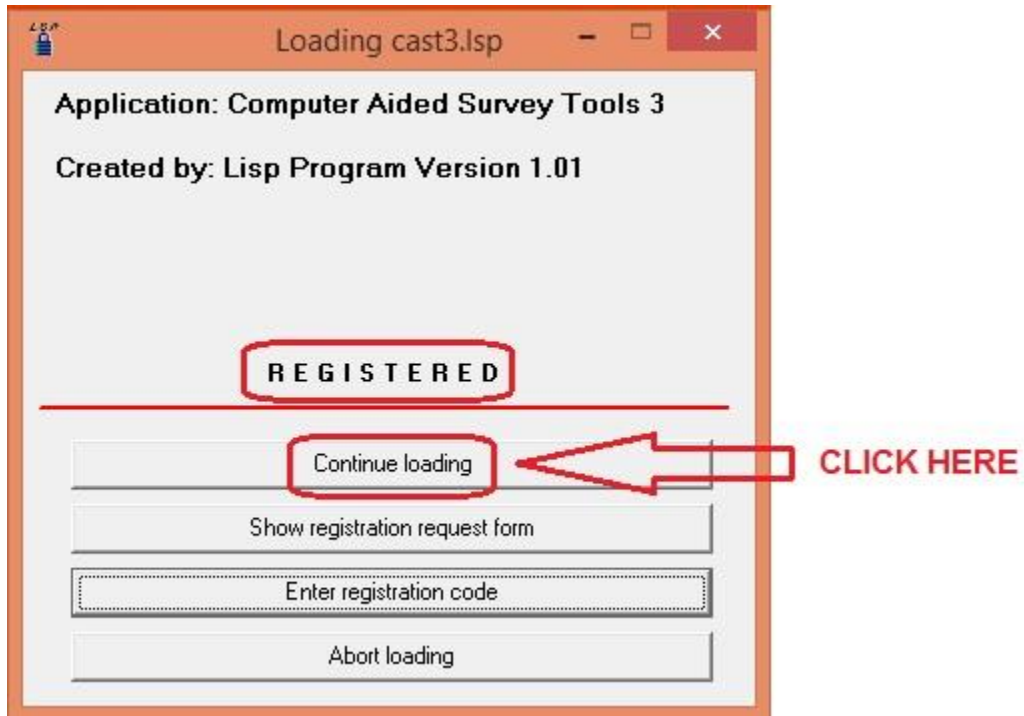
9 - End-User License Agreement, click [I Agree]



10 - Enter your Registration Code provided by Software developer , click [OK] when completed.



11 - Display a registered dialog box, click [Continue loading] button



12 – CAST3 Lisp program successfully loaded for ZWCad

```
*Precomp font width: 0.8500  
Precomp line space: 1.0000 (for BD usage only)  
Copyright (c) August 2015 All Rights Reserved. Cast3 v1.01  
Command: (  
nil  
Command:  
  
Command:
```