

Setup / Installation steps - GEOsCAD2-LT v.1.50 (Dongle version) For ZWCAD Pro Classic (PC/Computer Notebook installed with Windows XP / Windows 7 32-bit Operating System)

Note: Prerequisite / require software installed and activated before GEOsCAD2-LT installation & setup.

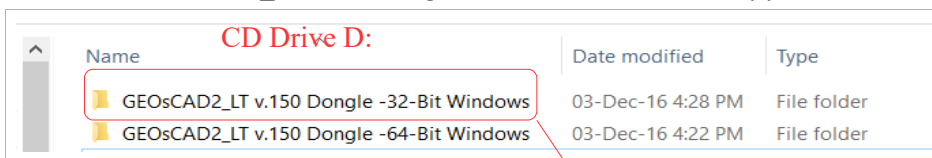
- Install ZWCAD 2017 from Product CD or provided download link.
- Install ZWCAD Pro Classic from Product CD or provide download link.
- Important:** Activate provided License using ZWCAD 2017 License Manager only.

Note:

- ZWCAD 2017 License activation process, will activate and enable ZWCAD 2017 & ZWCAD Pro Classic software to run in PC that installed with the both software.
- For ZWCAD Installation and License guide please refer to Quick Start Guide booklet includes in the package.

Step 1. Insert GEOsCAD2-LT product CD into CD Drive (eg. D:/)

Browse to folder GEOsCAD2_LT v.150 Dongle -32-Bit Windows and copy all the files in the folder.



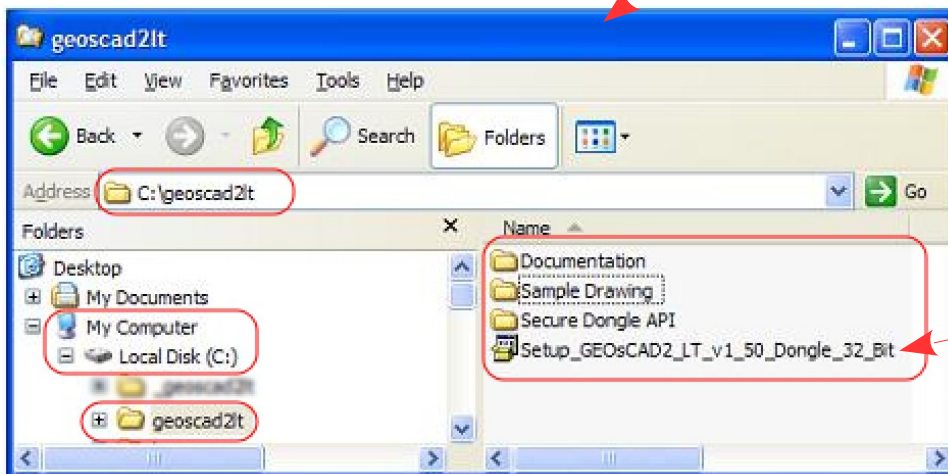
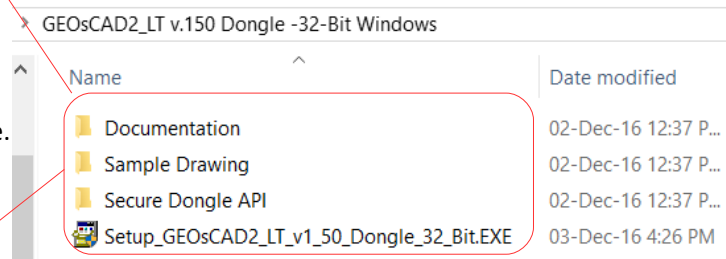
Step 2. Create a new folder name c:/geoscad2lt

Note: Folder name require to be exactly & case sensitive.

Copy all the files from folder

D:\GEOsCAD2_LT v.150 Dongle -32-Bit Windows

to c:/geoscad2lt

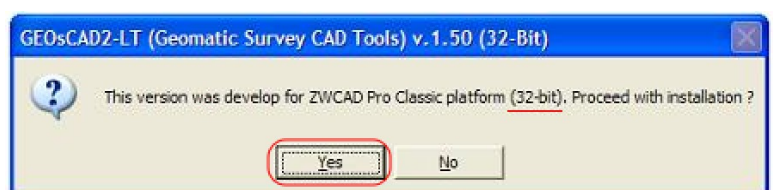


Step 3.
Double mouse click
To start installation

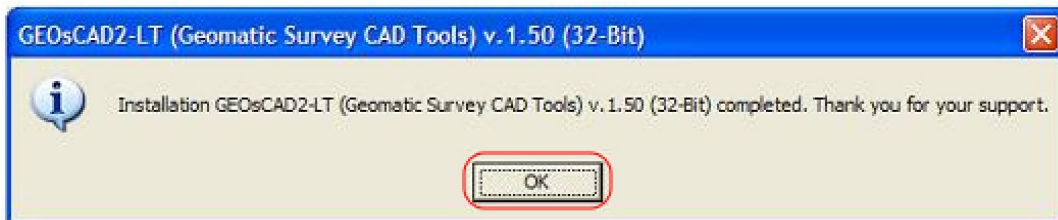
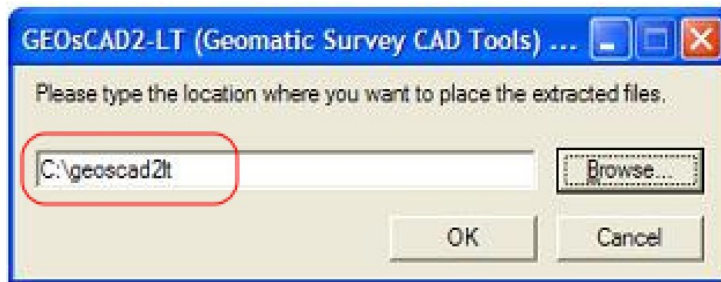
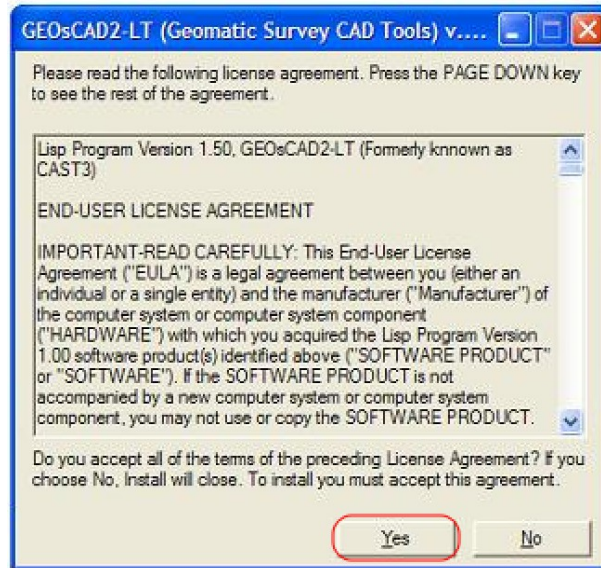
Step 3. Explore or browse to C:\geoscad2lt folder and double click on

Setup_GEOsCAD2_LT_v1_50_Dongle_32_Bit.EXE to start installation.

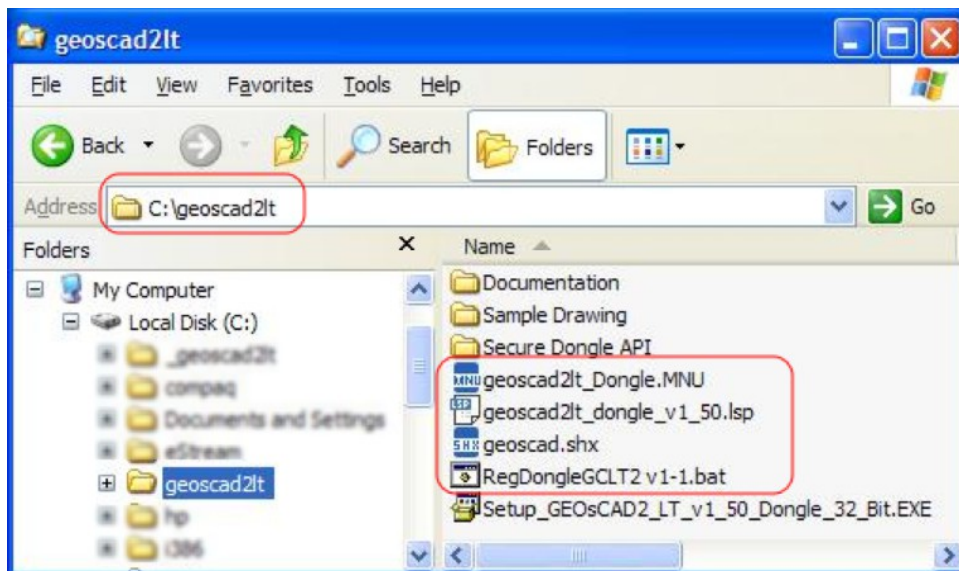
Step 4. Follow the rest of the steps from the screen



Step 4. Follow the rest of the steps from the screen ... cont.



Upon successful installation <C:\geoscad2lt> folder should have additional 4 files as shown below



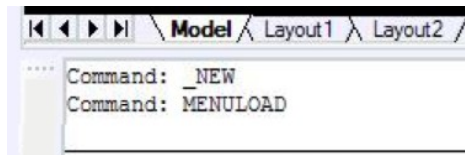
Step 5. Copy and paste *geoscad.shx* from [C:\geoscad2lt](#) to [C:\Program Files \(x86\)\ZWCAD Classic Eng\Fonts](#).
As shown in below image



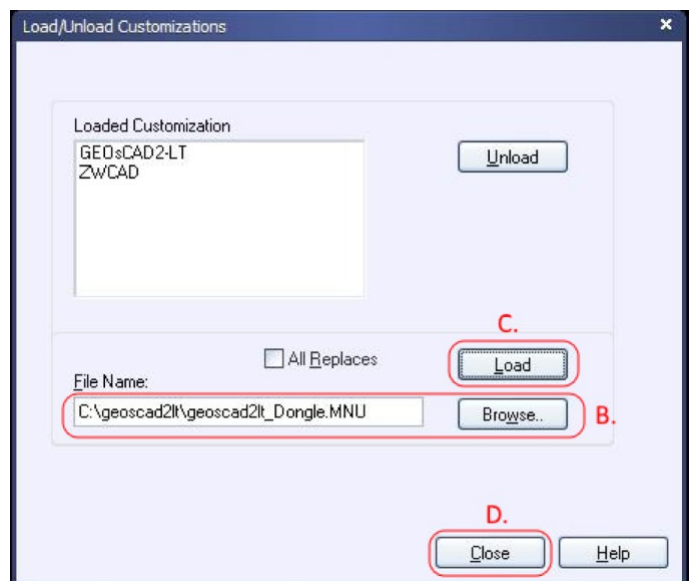
Loading GEOsCAD2-LT menu into ZWCAD Pro Classic

Step 6. Run or Launch ZWCAD Pro Classic

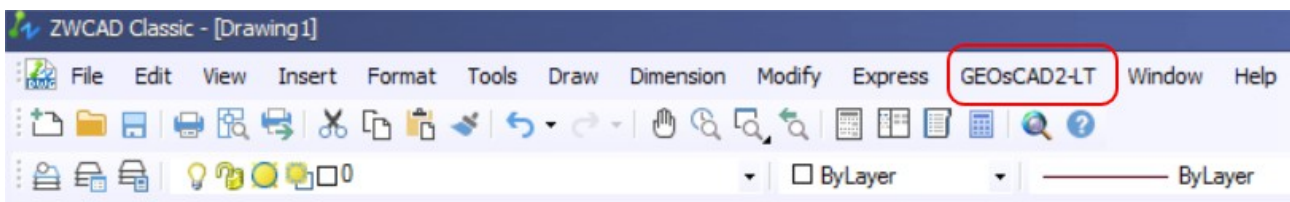
- A.** Under the command prompt area type `menuload` and hit return key.
Command: menuload



- B. to D.** refer to screen capture image



Upon successful load menu it should shown as below:

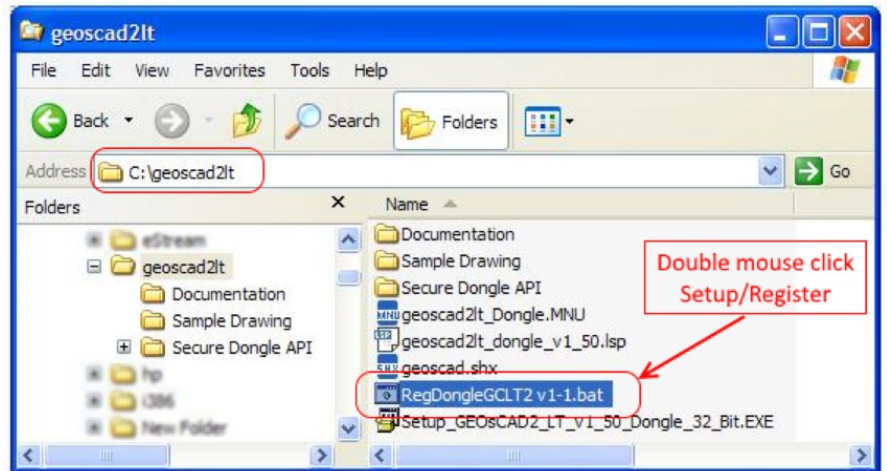


Step 7. Exit ZWCAD Pro Classic

Register Dongle – GEOsCAD2-LT

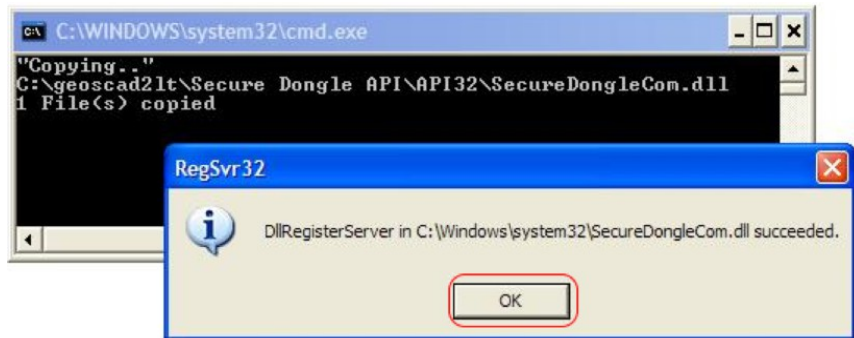
Note: Please ensure PC user have **Administrator** right

Step 8. Browse to [C:\geoscad2lt](#) folder and *double left mouse click* on **RegDongleGCLT2 v1-1.bat**



Successful registration screen will look as below image

Step 9. Click **OK** to exit.



Load GEOsCAD2-LT

Step 10. Run or Launch ZWCAD Classic
 From **GEOsCAD2-LT** Drop-down Menu
 Select **Settings**
 Follow by **Load GEOsCAD2-LT**
 (Please refer to image on the left for reference)

Step 11. Press **F2** key from the keyboard to confirm
 GEOsCAD2-LT is running fine or OK.
 (Below image indicate GEOsCAD2-LT is properly install / working)

