

Index

Section A: Installation of GEOsCAD2ac Pro 1

Section B: Setup GEOsCAD2ac Menu in AutoCAD..... 4

Section C: Register GEOsCAD2ac Dongle 7

Section D: Test Run GEOsCAD2ac software 8

Section E: GEOsCAD2ac Dongle Upgrade 9

Section A: Installation of GEOsCAD2ac Pro

Option 1: Installation from CD product package

Step 1. Insert GEOsCAD2 Product CD & browse to CD Drive, **double click** on **SetupCOPY_GC2_AC_Pro_v19.exe**

Name	Type
Dongle Update Tool	File Folder
GEOsCAD2ac Pro v19 (Win32-bit)	File Folder
GEOsCAD2ac Pro v19 (Win64-bit)	File Folder
SetupCOPY_GC2_AC_Pro_v19.exe	Application

Note: From the above action, geoscad2 folder automatic created in drive C:\ with the following folder and files copied:

C:\geoscad2ac\

Name	Type
COM Library	File Folder
Sample Drawing	File Folder
Setup_GEOsCAD2_AC_PRO_v19_Dongle_x64.EXE	Application

Proceed to Step 2. next page

Option 2: Installation from Download links

[Receive from Support Team (support@cadfocus.com.my)]

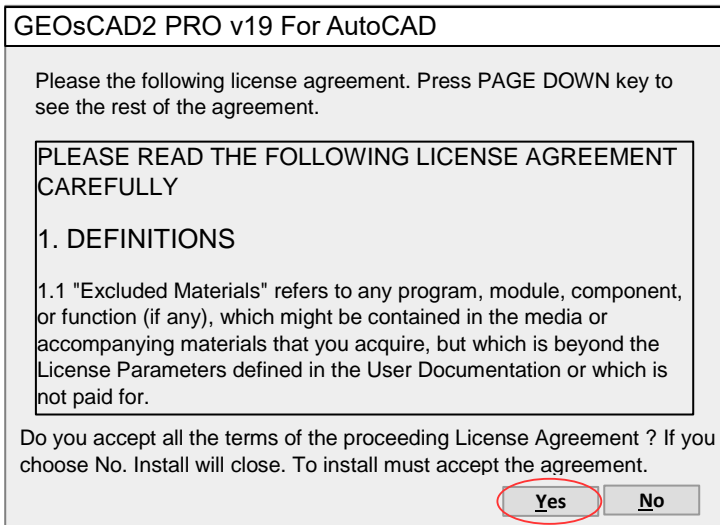
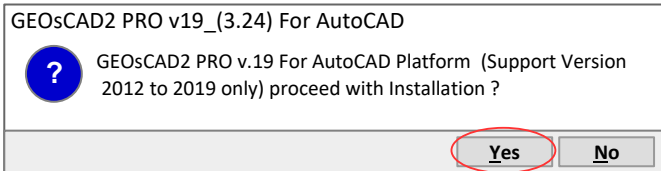
Step 1. Identify the **Windows Operating System (64-bit or 32-bit)**, download and unzip to a temporary folder. eg. C:\Downloads\temp
C:\Downloads\temp\GEOsCAD2ac Pro v19 (Win64-bit)\

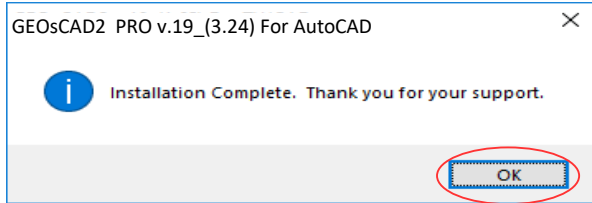
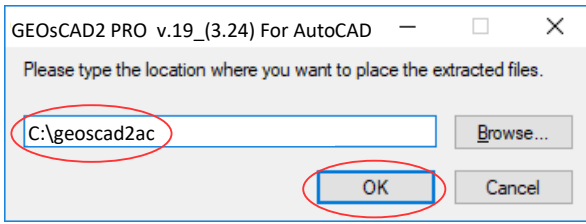
Name	Type
 COM Library	File Folder
 Sample Drawing	File Folder
Setup_GEOsCAD2_AC_PRO_v19_Dongle_x64.EXE	Application

- (a) Create '**geoscad2ac**' folder in Local Disk (C:)
Note: '**geoscad2ac**' folder name need to be exact and is case sensitive.
- (b) Copy Copy or Move the above folders and file from
C:\Downloads\temp\GEOsCAD2ac Pro v19 (Win64-bit) to **C:\geoscad2ac** folder

Step 2. Go to **C:\geoscad2** and Double click on
"Setup_GEOsCAD2_AC_PRO_v19_Dongle_x64.EXE"

Step 3. Follow the rest of the steps from the screen.

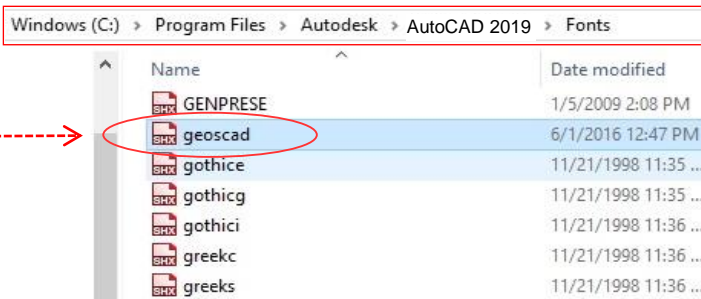




Note: Upon **successful installation**, **C:\geoscad2ac** folder should have additional files as shown in below.

Name	Type
COM Library	File Folder
Sample Drawing	File Folder
geoscad.shx	SHX File
geoscad2ac.exe	Application
geoscad.lsp	Lisp Application Source
GEOSCAD2.MNU	MNU File
GEOSCAD2ENG.MNU	MNU File
geoscad2rso.exe	Application
geoscad2rso	Lisp Application Source
Reg_GC2DongleComLib.exe	Application
Setup_GEOsCAD2_v19_Dongle_x64.EXE	Application
UnReg_GC2DongleComLib v1.bat.exe	Application

Step 4. Copy and paste **geoscad.shx** from **C:\geoscad2ac** to **C:\Program Files\AUTODESK\AUTOCAD2019\fonts**

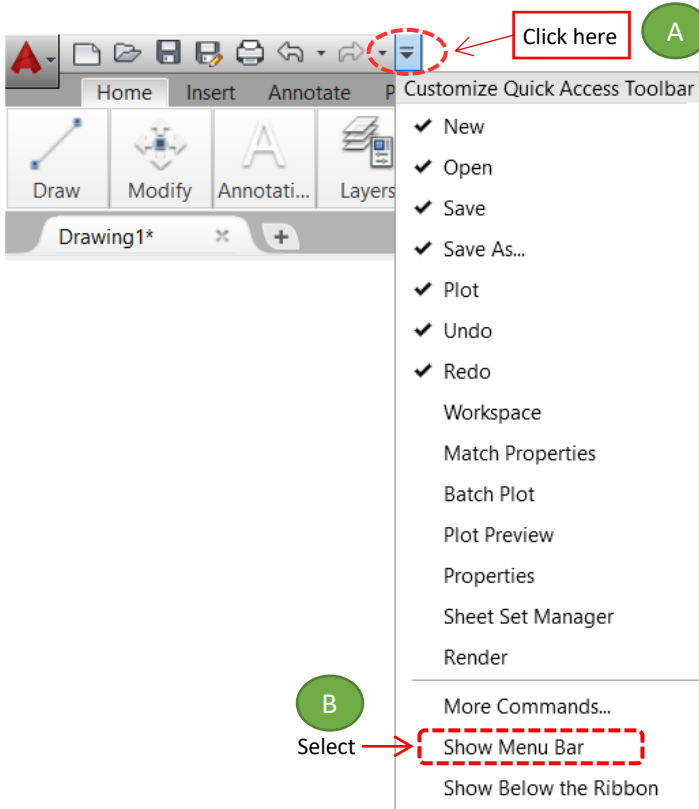


Section B: Setup GEOsCAD2ac Menu in AutoCAD

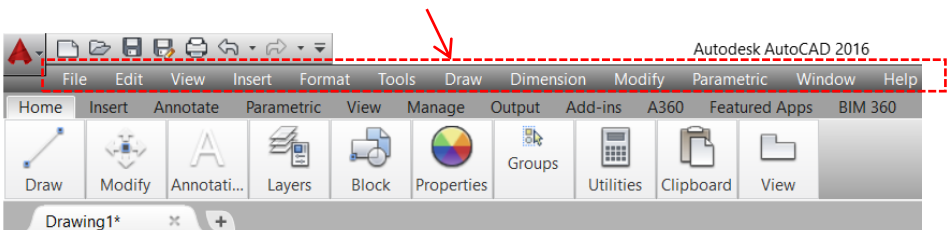
Note: If default user interface already in **Classic mode**, skip Step 1 & 2, and start with Step 3. If you are using **Ribbon** interface, start with Step 1.

Step 1. Run AutoCAD Application/ Software

Step 2. Click Quick Access Toolbar drop-down > Show Menu Bar.

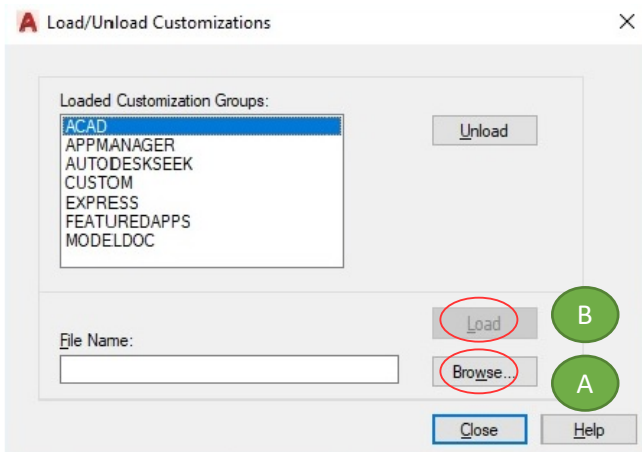


Menu bar

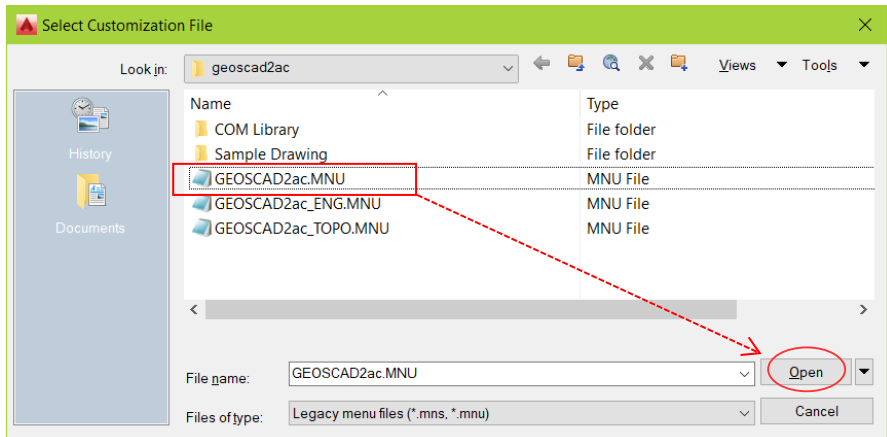


Step 3. Input “**MENULOAD**” command
[Command: MENULOAD]

Step 4. ‘Load/Unload Customization’ dialog box appear.

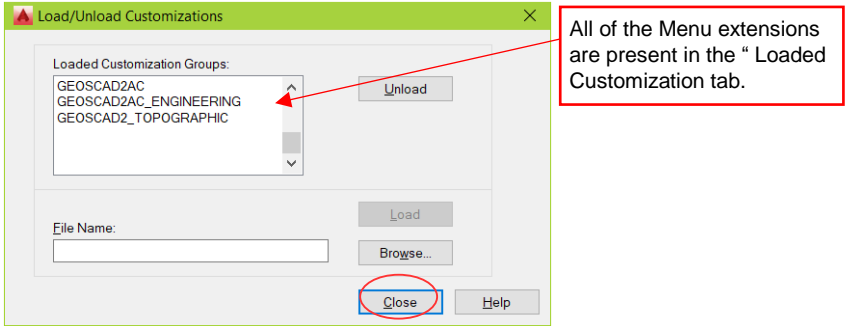


(A) Click ‘**Browse**’ and Go to **C:\geoscad2ac** folder and Open **GEOSCAD2ac.MNU**



(B) Click Load button
Repeat Steps A & B to for
GEOSCAD2ac_ENG.MNU & GEOSCAD2ac_TOPO.MNU

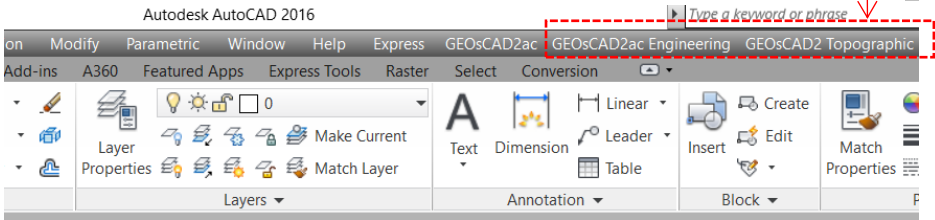
'Load/Unload Customizations' dialog box after loaded with GEOSCAD2ac, GEOSCAD2ac_ENG & GEOSCAD2ac_TOPO is shown as below.



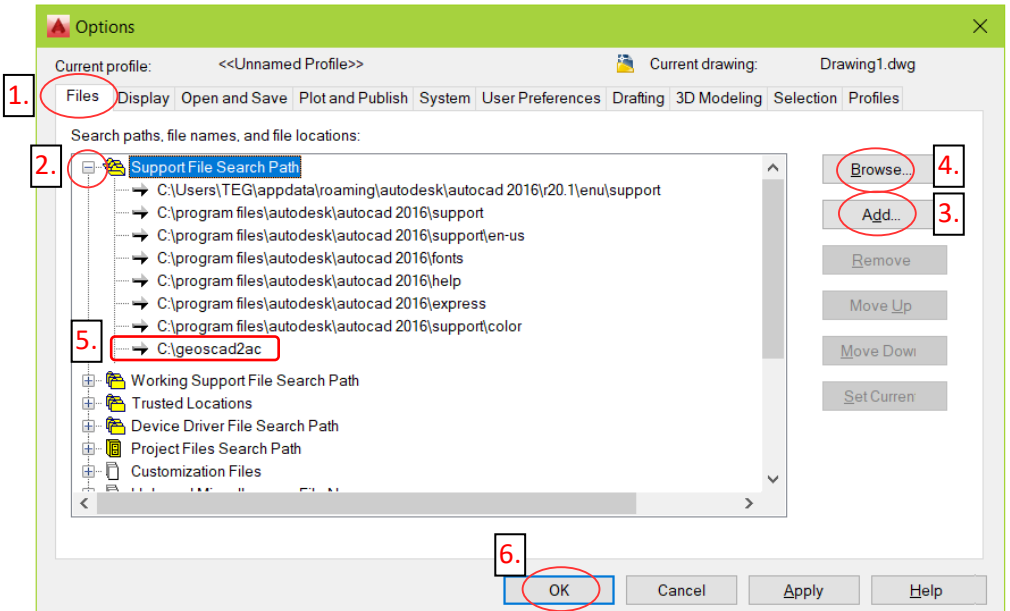
(C) Click 'Close'

The GEOsCAD2ac Menu.

****Upon Successfully menu load, pull-down menu should display as below**

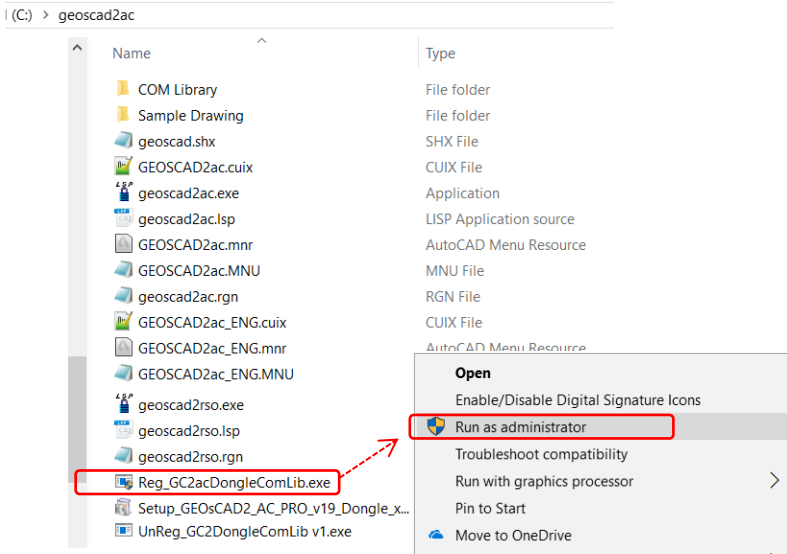


(D) Add C:\geoscadac folder to AutoCAD Support File Search Path
Input "Options" command and follow below steps.

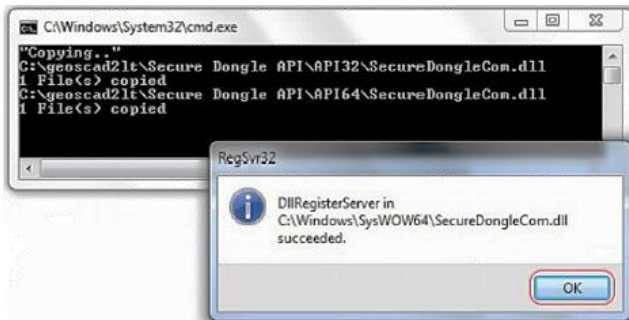


Section C: Register GEOsCAD2ac Dongle

- Step 1.** (i) Insert GEOsCAD2 Dongle into USB port
- (ii) Browse to `C:\geoscad2ac` folder and Right *mouse click* on **“Reg_GC2acDongleComLib.exe”** follow by select **“Run as administrator”**



Note: Successful Register Dongle Driver should look like below image



- Step 2.** Click **OK** to Exit

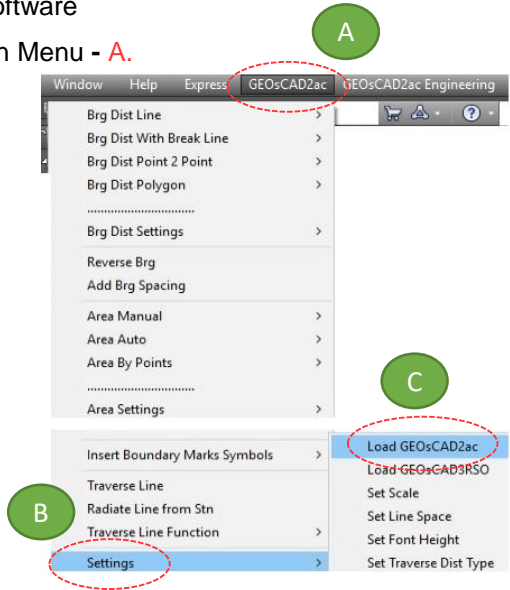
Section D: Test Run GEOsCAD2ac software

Step 1. Launch AutoCAD Application/ Software

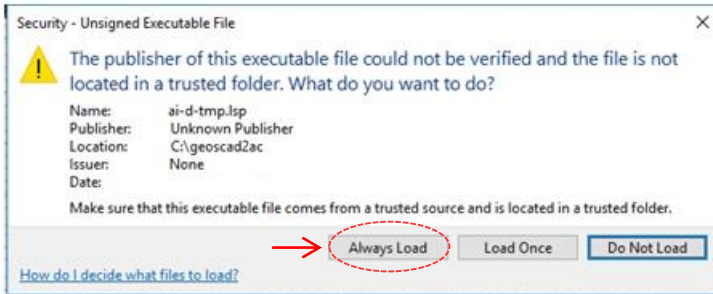
Step 2. Select **GEOsCAD2ac** Drop-down Menu - **A.**

Select **Settings** - **B.**

Select **Load GEOsCAD2ac** - **C.**



****Note:** If this message box appears for AutoCAD 2014 and above, select **“Always Load”**



Step 3. Press F2 key to change to AutoCAD Text Window.

****Below image indicate GEOsCAD2 v.19 is successfully load.**

```
Command: (Startapp "c:/geoscad2ac/geoscad2ac.exe") 33
Command: (load "c:\\geoscad2ac\\ai-d-tmp.lsp")
<* Encrypted by www.ai-d.com *>
Access SecureDongle COM module Success
Built version v.19(3.24)_1
GEOsCAD2 Pro v.19 For AutoCAD
Product AutoCAD check passed AutoCAD 2016
Precomp scale: 1000
Precomp font height 1.6
Precomp font width: 0.85
Precomp line space: 1 (for BD usage only)
Copyright (c) 2016-2018 Cad Focus Pte. Ltd. All Rights Reserved. www.cadfocus.com.my
```

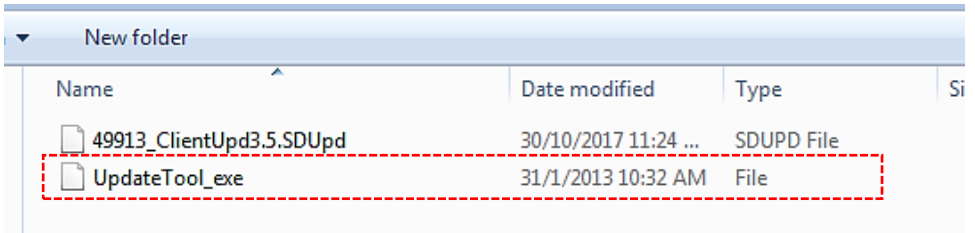

Section E: GEOsCAD2ac Dongle Upgrade

**** Only Applicable for GEOsCAD2ac Upgrade Purchase****

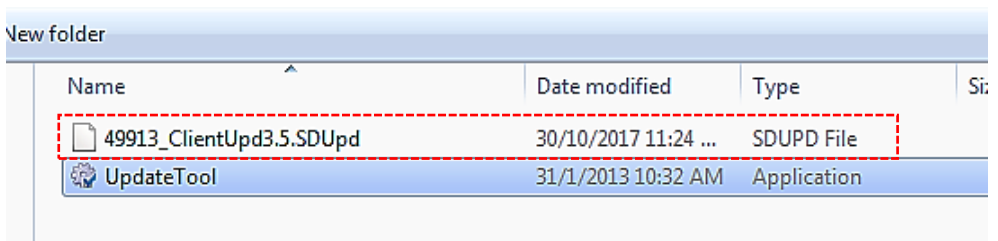
Step 1. Insert GEOsCAD2 Dongle in the USB port

Step 2. Download and unzip the “Dongle_Upd.zip” file

Step 3. Rename the **UpdateTool_exe** to **UpdateTool.exe**

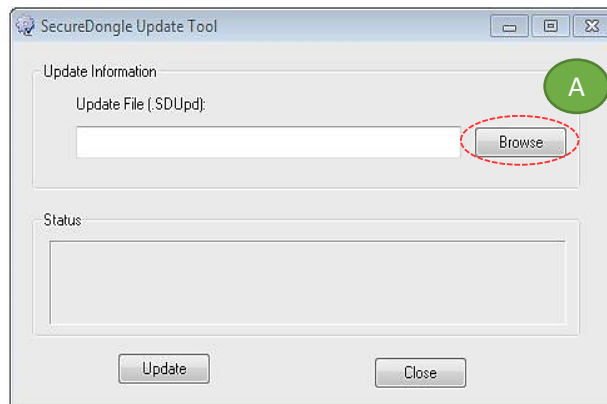


Step 4. Double click on the **UpdateTool.exe**

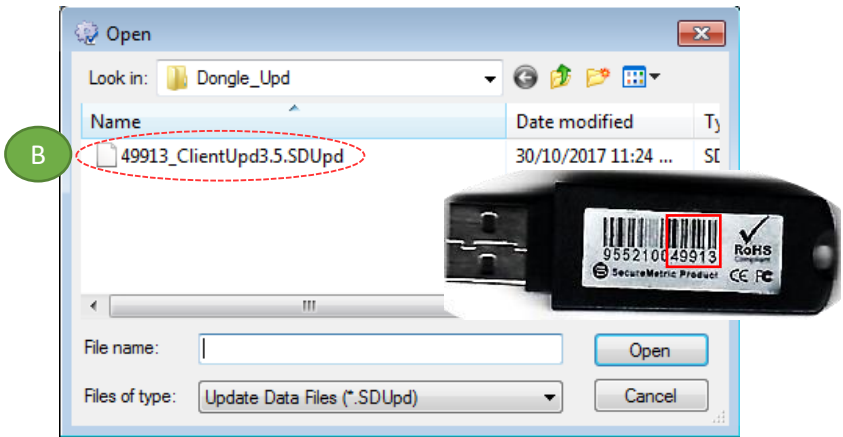


Step 5. ‘SecureDongle Update Tool’ dialog box appeared.

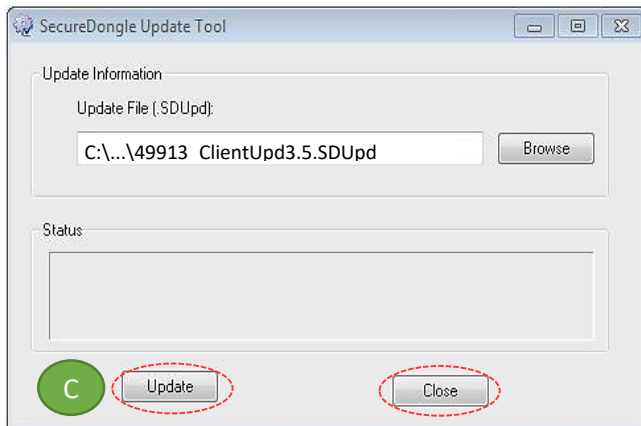
(A) Click ‘Browse’



(B) Locate the update file correspond to Dongle code [eg. 48296_ClientUpd3.5.SDUpd]



(C) Click 'Update' follow by 'Close'



Step 6. If **Success**, Open ZWCAD Application / Software and test run on GEOsCAD2

CAD FOCUS Sdn Bhd

Suite D-5-16, Level 5 Vivo Block D, Southgate Commercial Centre Off Jalan Chan Sow Lin, 55200 Kuala Lumpur. Tel:03 9223-1918 Fax:03 9221-6900 Website www.cadfocus.com.my

Facebook: www.facebook.com/ZWCAD.cadfocus