

Index

Section A: Installation of GEOsCAD2 Std 1

Section B: Setup GEOsCAD2 Menu in ZWCAD 4

Section C: Register GEOsCAD2 Dongle 5





Section D: Test Run GEOsCAD2 software..... 6

Section E: GEOsCAD2 Dongle Upgrade..... 7

Section A: Installation of GEOsCAD2 Std

Option 1: Installation from **CD product package** 1

Step 1. Insert GEOsCAD2 Product CD & browse to CD Drive, **double click** on **SetupCOPY_ZW-Std_v19.exe**

Name	Type
 Dongle Update Tool	File Folder
 GEOsCAD2 Std v19 (Win32-bit)	File Folder
 GEOsCAD2 Std v19 (Win64-bit)	File Folder
 SetupCOPY_ZW-Std_v19.exe	Application

Note: From the above action, geoscad2 folder automatic created in drive C:\ with the following folder and files copied:

C:\geoscad2\

Name	Type
 COM Library	File Folder
 Menu	File Folder
 Sample Drawing	FileFolder
 Setup_GEOsCAD2_v19_x64.EXE	Application

Proceed to Step 2. next page

Option 2: Installation from Download links

2

Step 1. Identify the Windows Operating System (64-bit or 32-bit), download to a temporary folder. Please refer to below download link:

http://cadfocus.com.my/download/GEOsCAD2/v19zw_2020/GEOsCAD2_v19_Win64-bit.zip
http://cadfocus.com.my/download/GEOsCAD2/v19zw_2020/GEOsCAD2_v19_Win32-bit.zip

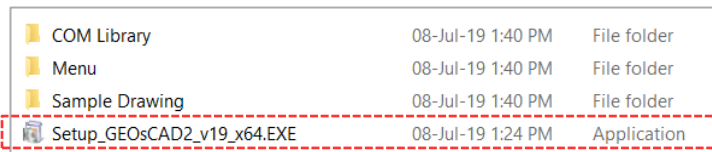
Step 2. Create 'geoscad2' folder in Local Disk (C:) eg. **C:\geoscad2**

Note: Folder name require to be exact and is case sensitive.

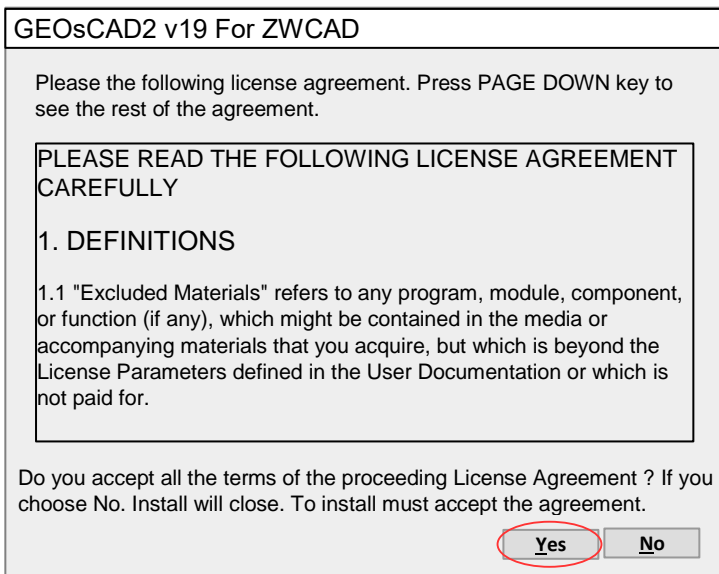
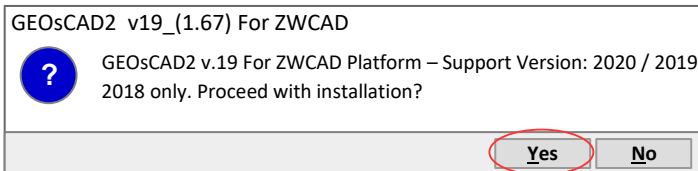
Step 3. Unzip or extract files from the downloaded zip file to **C:\geoscad2** folder

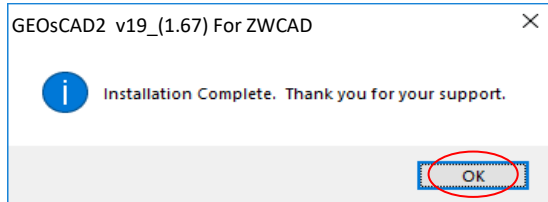
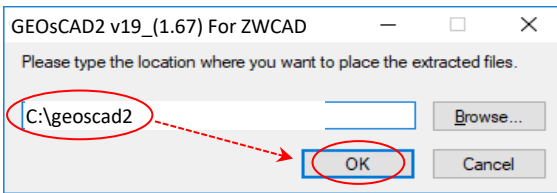
Step 4. Go to **C:\geoscad2** folder and Double click on

“Setup_GEOsCAD2_v19_x64.EXE”



Step 5. Follow the rest of the steps from the screen.

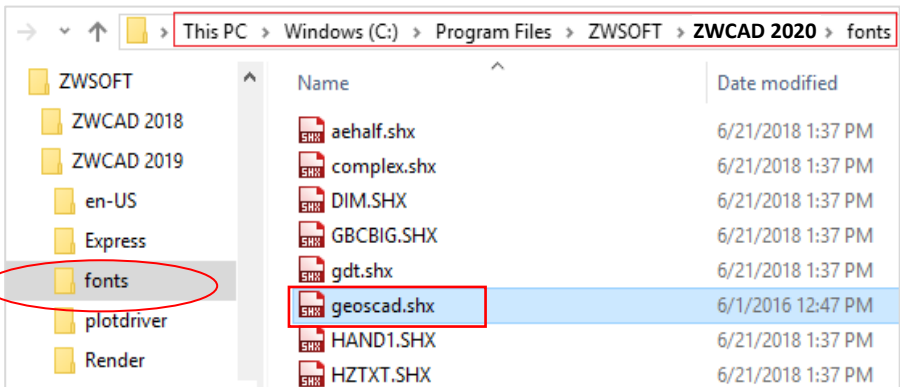




Note: Upon **successful installation**, **C:\geoscad2** folder should have additional files as shown in below.

Name	Type
COM Library	File Folder
Menu	File Folder
Sample Drawing	File Folder
geoscad.shx	SHX File
geoscad.lsp	Lisp Application Source
geoscad2rso.lsp	Lisp Application Source
Reg_GC2DongleComLib.exe	Application
Setup_GEOsCAD2_v19_Dongle_x64.EXE	Application
TopoSurvey.lsp	Lisp Application Source
UnReg_GC2DongleComLib v1.bat.exe	Application

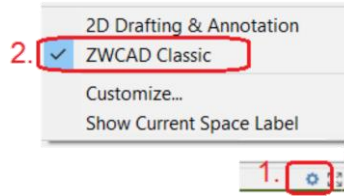
Step 4. Copy and paste **geoscad.shx** from **C:\geoscad2** to **C:\Program Files\ZWSOFT\ZWCAD2020\fonts**



Section B: Setup GEOsCAD2 Menu in ZWCAD

Step 1. Run ZWCAD Application/ Software

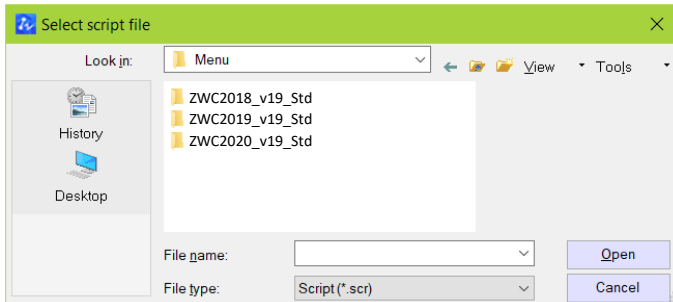
Step 2. Switch ZWCAD User Interface to ZWCAD Classic view.



Step 3. Input “SCRIPT” command
[Command: SCRIPT]

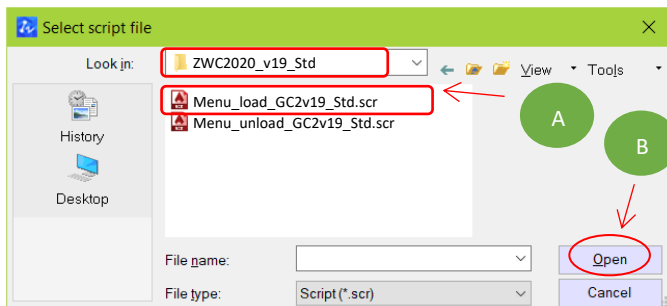
Step 4. ‘Select script file’ dialog box appear.

i) Browse to **C:\geoscad2Menu**

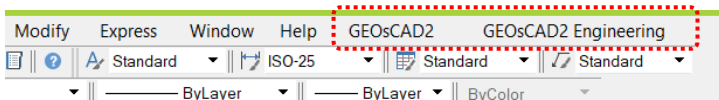


ii) Please confirm the correct ZWCAD version installed and Go to respective version folder eg.

ZWCAD 2020 goto **ZWC2020_19_Std** folder (A) follow by select **Menu_load_GC2v19_Std.scr** (A) and click **Open** button (B).



****Upon Successfully menu load, pull-down menu should display as below**

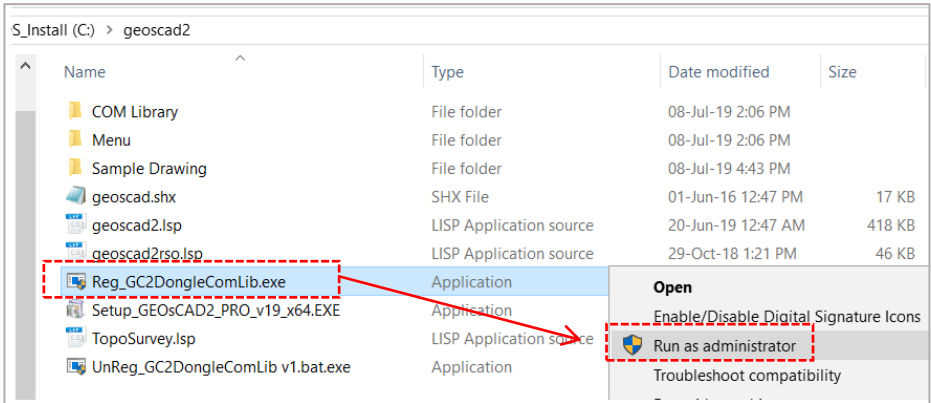


Section C: Register GEOsCAD2 Dongle

Step 1. (i) Insert GEOsCAD2 Dongle into USB port

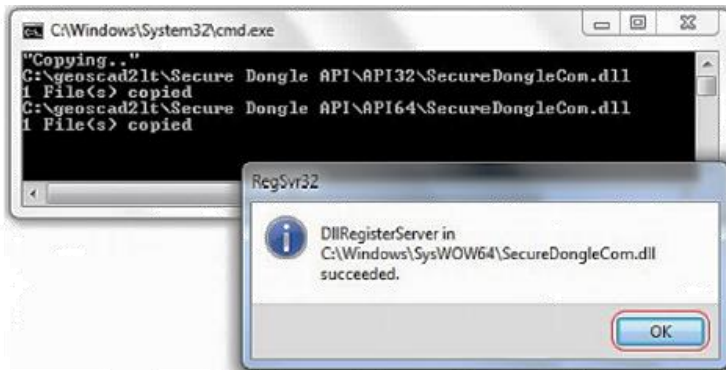
(ii) Browse to **C:\geoscad2** folder and Right *mouse click* on

Reg_GC2DongleComLib.exe then select on **Run as Administrator.**



Note: Successful Register Dongle Driver should be shown as the image below

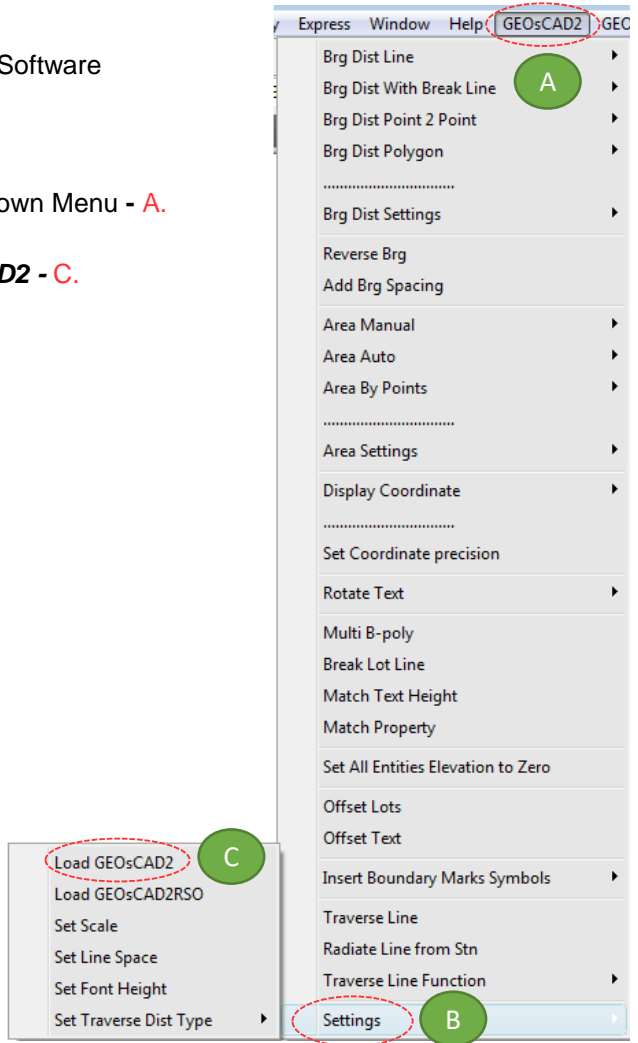
Step 2. Click **OK** to Exit



Section D: Test Run GEOsCAD2 software

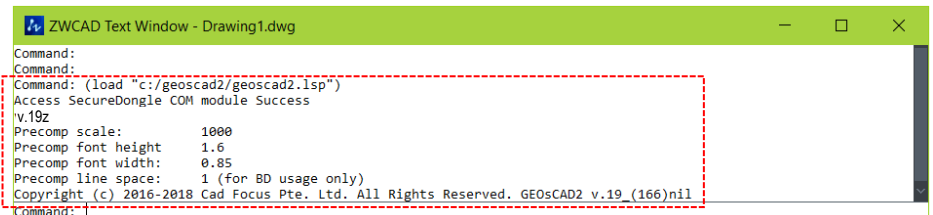
Step 1. Run ZWCAD Application/ Software

Step 2. From **GEOsCAD2** Drop-down Menu - **A**.
Select **Settings** - **B**.
Follow by **Load GEOsCAD2** - **C**.



Step 3. Press F2 key to change to ZWCAD Text Window

**Below image indicate GEOsCAD2 Pro v.19 is successfully load.



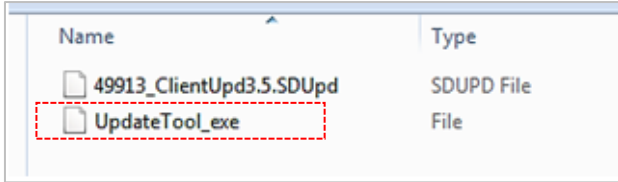
Section E: GEOsCAD2 Dongle Upgrade

**** Only Applicable for GEOsCAD2 Upgrade Purchase****

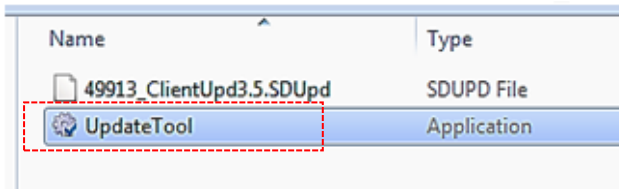
Step 1. Insert GEOsCAD2 Dongle in the USB port

Step 2. Download and unzip the “Dongle_Upd.zip” file

Step 3. Rename the **UpdateTool_exe** to **UpdateTool.exe**

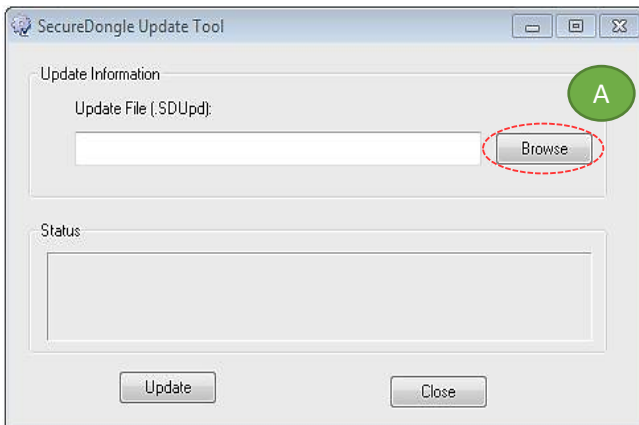


Step 4. Double click on the **UpdateTool.exe**

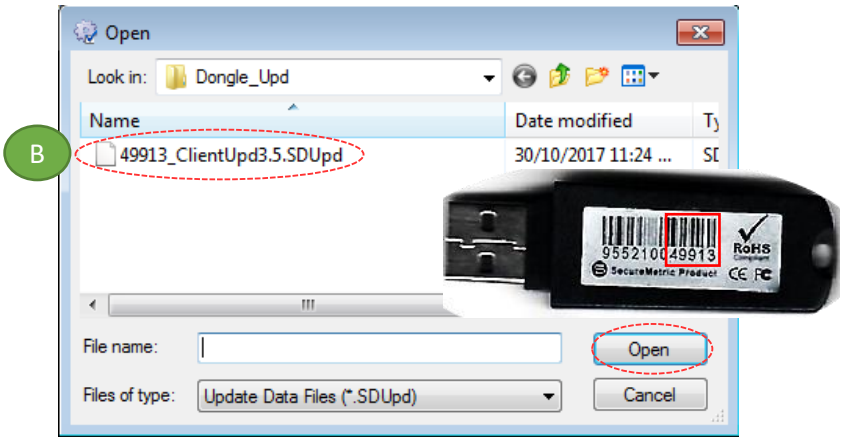


Step 5. ‘SecureDongle Update Tool’ dialog box appeared.

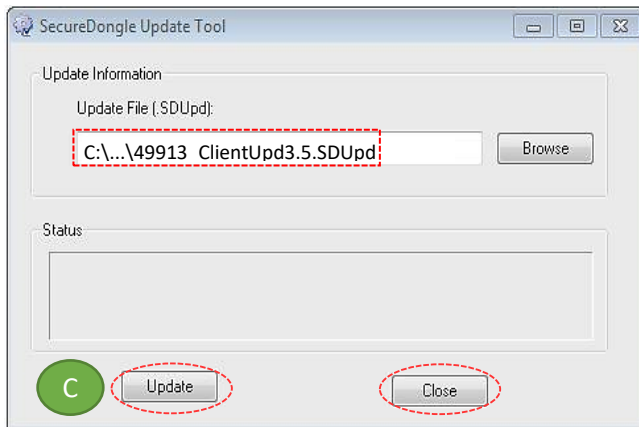
(A) Click ‘Browse’



(B) Locate the update file correspond to Dongle code, Select file follow by Open [eg. 48296_ClientUpd3.5.SDUpd]



(C) Click 'Update' follow by 'Close'



Step 6. If **Success**, Open ZWCAD Application / Software and test run on GEOsCAD2