

Index

Section A: Installation of GEOsCAD2 Std.....1

Section B: Setup GEOsCAD2 Menu in ZWCAD4

Section C: Test Run GEOsCAD2 software5

Section D: GEOsCAD2 Dongle Upgrade.....6

Section A: Installation of GEOsCAD2 Std

Option 1: Installation from CD product package

1

Step 1. Insert GEOsCAD2 Product CD & browse to CD Drive, **double click** on **SetupCOPY_GC2_20_ZW_Std.exe**

Name	Type
Dongle Update Tool	File Folder
GEOsCAD2 Std v20 (Win32-bit)	File Folder
GEOsCAD2 Std v20 (Win64-bit)	File Folder
SetupCOPY_GC2_20_ZW_Std.exe	Application

Note: From the above action, geoscad2 folder automatic created in drive C\
with the following folder and files copied:

C:\geoscad2\

Name	Type
Bin	File Folder
COM Library	File Folder
Menu	File Folder
Sample Drawing	FileFolder
Setup_GC2_Std_20_ZW_x64.exe	Application

Proceed to Step 4. next page

Option 2: Installation from **Download links**

2

Step 1. Identify the Windows Operating System (64-bit or 32-bit), download to a temporary folder. Please refer to below download link:

http://cadfocus.com.my/download/GEOsCAD2/v20zw/GEOsCAD2_v20-169_Win64-bit.zip

http://cadfocus.com.my/download/GEOsCAD2/v20zw/GEOsCAD2_v20-169_Win32-bit.zip

Step 2. Create '**geoscad2**' folder in Local Disk (C:) eg. **C:\geoscad2**

Note: Folder name require to be exact and is case sensitive.

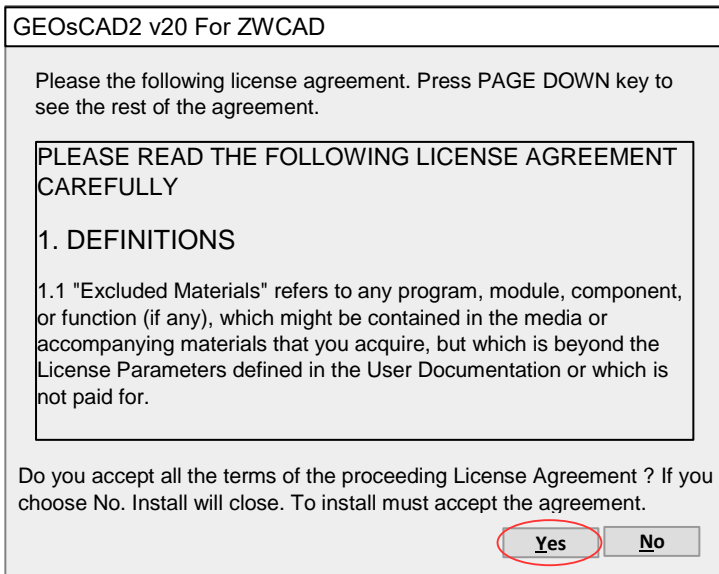
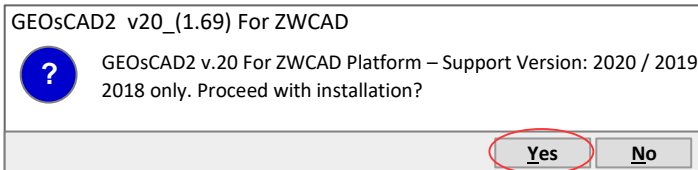
Step 3. Unzip file and place all extracted files onto **C:\geoscad2** folder

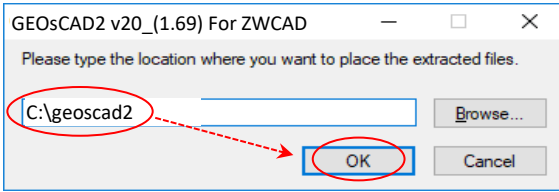
Step 4. Go to **C:\geoscad2** folder and Double click on

"Setup_GC2_Std_20_ZW_x64.exe"

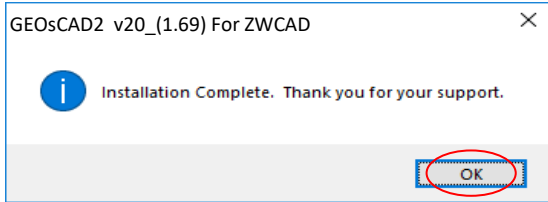
Name	Type
Bin	File Folder
COM Library	File Folder
Menu	File Folder
Sample Drawing	FileFolder
Setup_GC2_Std_20_ZW_x64.exe	Application

Step 5. Follow the rest of the steps from the screen.

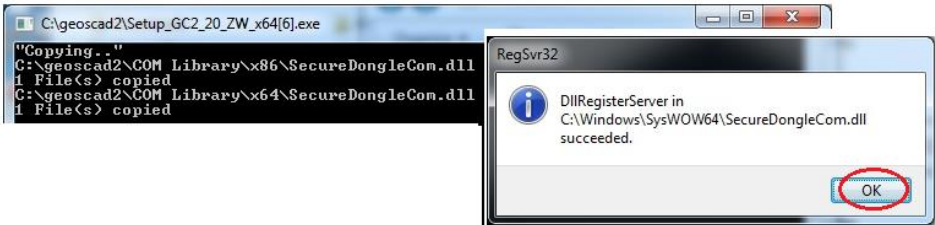




Note: Location folder name have to be exact and case sensitive “**geoscad2**”.



Dongle COM Library successfully registered



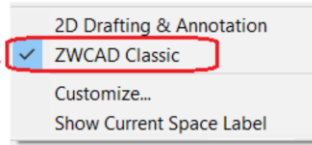
Note: Upon **successful installation**, **C:\geoscad2** folder should have additional files as shown in below.

Name	Type
COM Library	File Folder
Menu	File Folder
Sample Drawing	File Folder
geoscad.shx	SHX File
geoscad.lsp	Lisp Application Source
geoscad2rso.lsp	Lisp Application Source
Reg_GC2DongleComLib.exe	Application
Setup_GC2_Std_20_ZW_x64.exe	Application
UnReg_GC2DongleComLib v1.bat.exe	Application

Section B: Setup GEOsCAD2 Menu in ZWCAD

Step 1. Run ZWCAD Application/ Software

Step 2. Switch ZWCAD User Interface to ZWCAD Classic view.

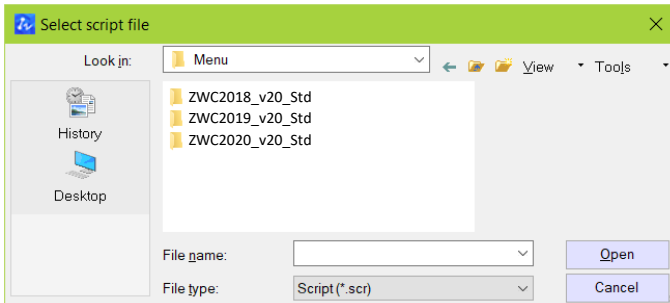


Step 3. Input “SCRIPT” command
[Command: SCRIPT]



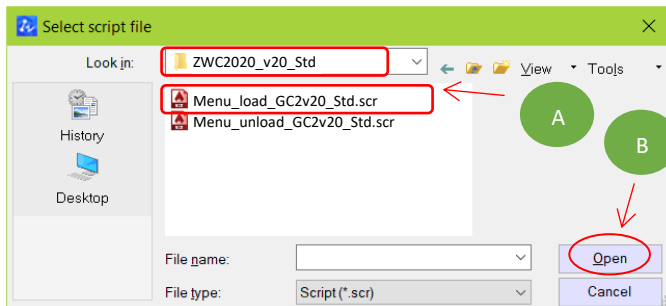
Step 4. ‘Select script file’ dialog box appear.

i) Browse to **C:\geoscad2\Menu**

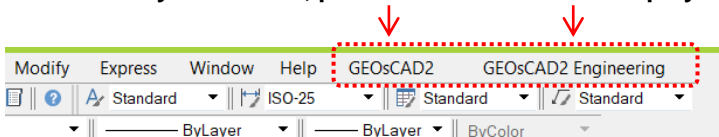


ii) Please confirm the correct ZWCAD version installed and Go to respective version folder eg.

ZWCAD 2020 goto **ZWC2020_20_Std** folder (A) follow by select **Menu_load_GC2v20_Std.scr** (A) and click **Open** button (B).



****Upon Successfully menu load, pull-down menu should display as below**



Section C: Test Run GEOsCAD2 software

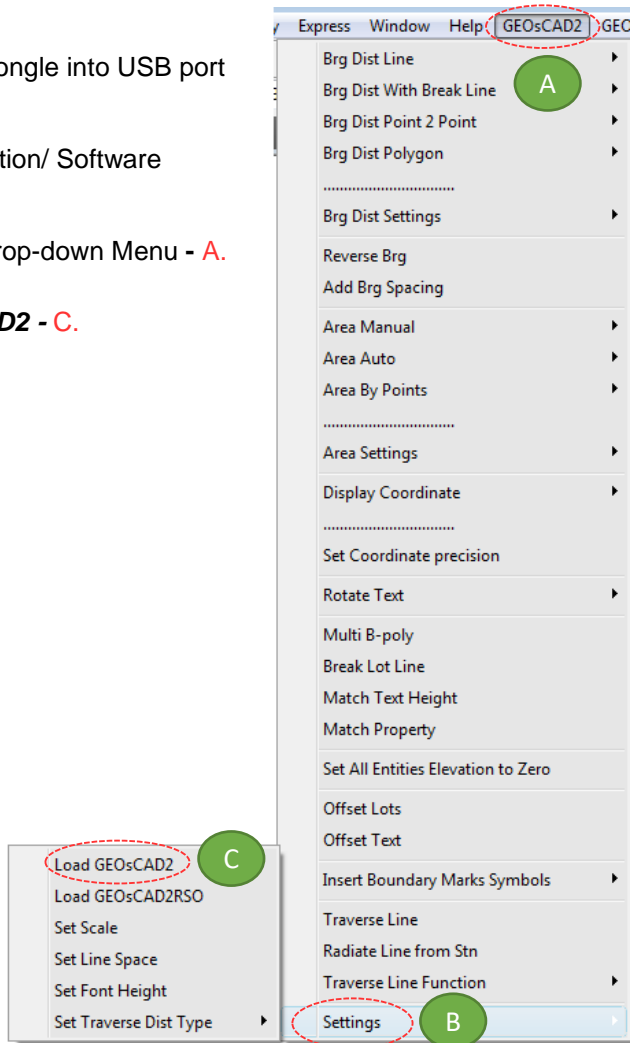
Step 1. Insert GEOsCAD2 Dongle into USB port

Step 2. Run ZWCAD Application/ Software

Step 3. From **GEOsCAD2** Drop-down Menu - **A**.

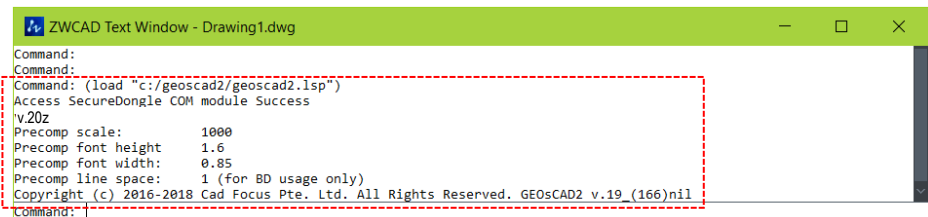
Select **Settings** - **B**.

Follow by **Load GEOsCAD2** - **C**.



Step 4. Press F2 key to change to ZWCAD Text Window

**Below image indicate GEOsCAD2 Std v.20 is successfully loaded.



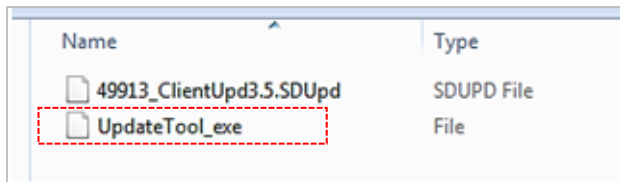
Section D: GEOsCAD2 Dongle Upgrade

**** Only Applicable for GEOsCAD2 Upgrade Purchase ****

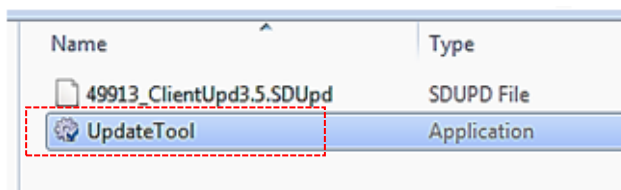
Step 1. Insert GEOsCAD2 Dongle in the USB port

Step 2. Download and unzip the “Dongle_Upd.zip” file

Step 3. Rename the **UpdateTool_exe** to **UpdateTool.exe**

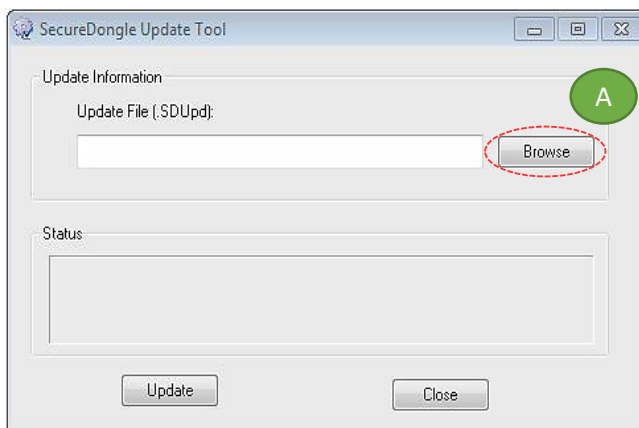


Step 4. Double click on the **UpdateTool.exe**

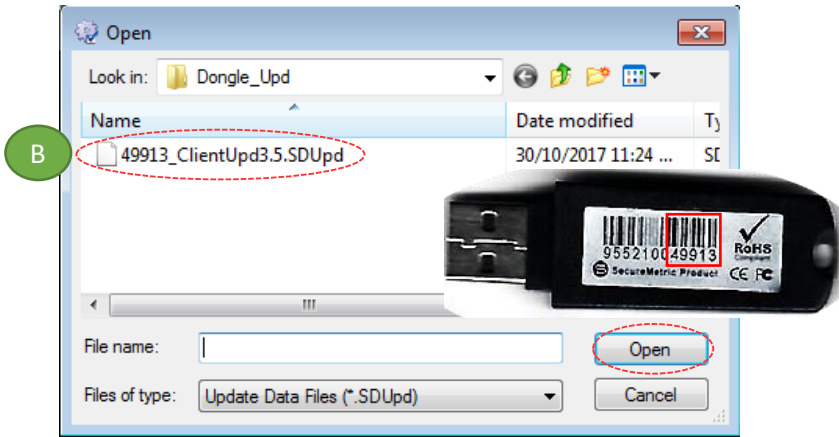


Step 5. ‘SecureDongle Update Tool’ dialog box appeared.

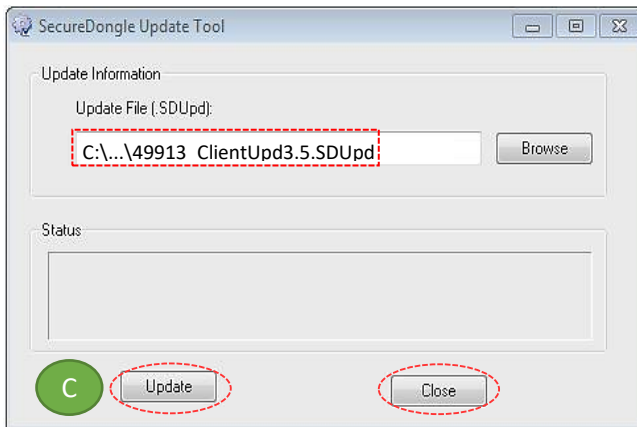
(A) Click ‘Browse’



(B) Locate the update file correspond to Dongle code, Select file follow by Open [eg. 48296_ClientUpd3.5.SDUpd]



(C) Click 'Update' follow by 'Close'



Step 6. If **Success**, Open ZWCAD Application / Software and test run on GEOsCAD2