

## Index

Section A: Installation of GEOsCAD2 Std ..... 1

Section B: Setup GEOsCAD2ac Menu in AutoCAD..... 5

Section C: Test Run GEOsCAD2ac software ..... 8

Section D: GEOsCAD2ac Dongle Upgrade ..... 9

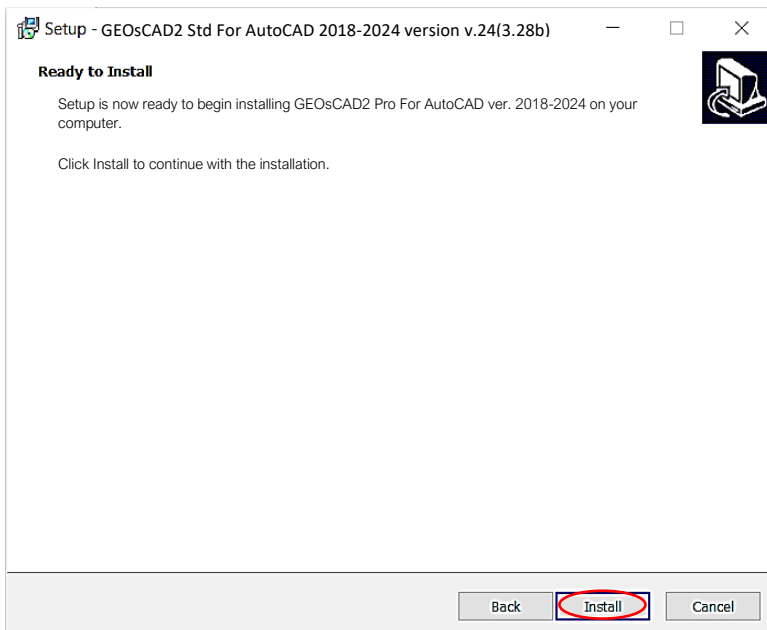
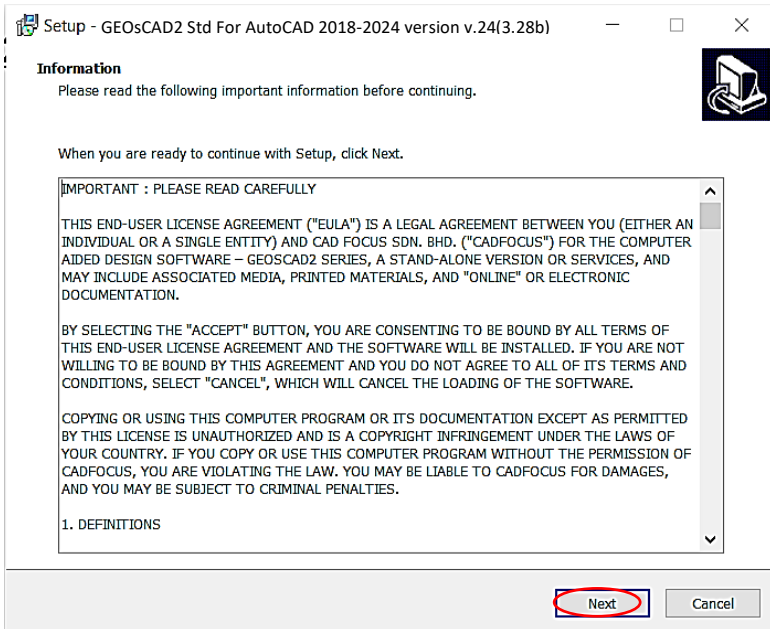
## Section A: Installation of GEOsCAD2 Std

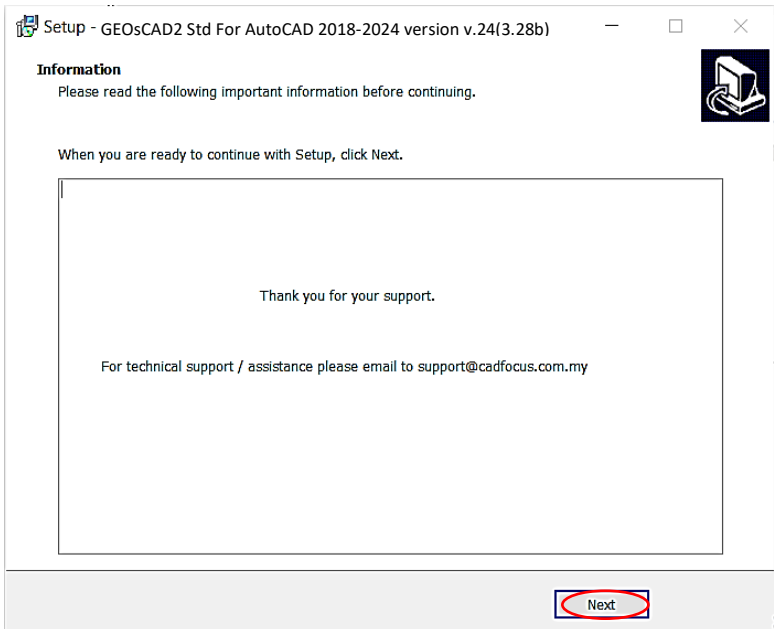
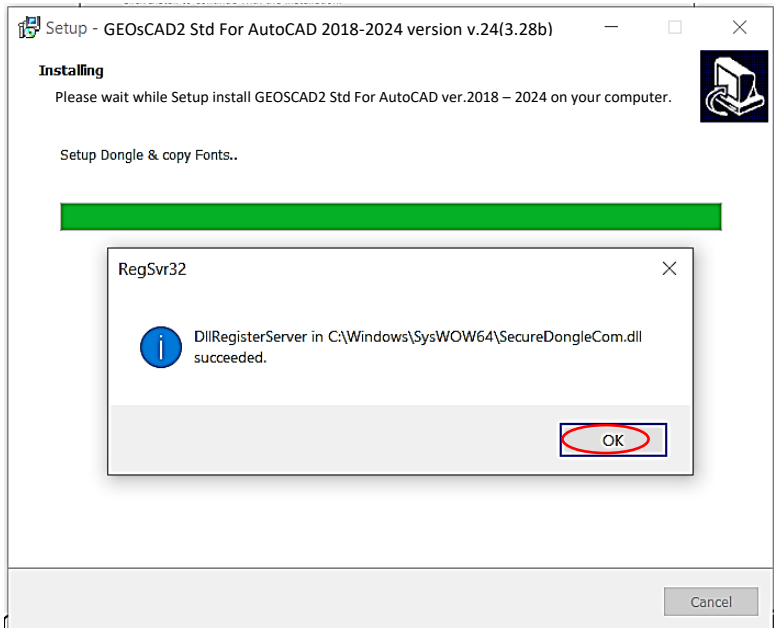
Step 1. Insert GEOsCAD2 Product CD,  
browse to CD Drive...\**GEOsCAD2 For AutoCAD\**v.24\ folder  
and double left mouse click on “**GC2v24\_ac\_64-bit\_Setup.exe**”  
to start the installation.

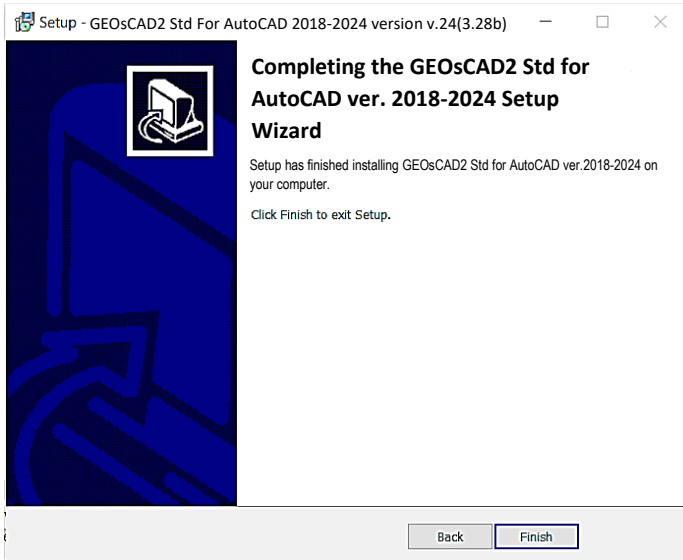
Note:

If do not have / lost product CD send an email to below address to request for “**GC2v24\_ac\_64-bit\_Setup.exe**” download link.  
[support@cadfocus.com.my](mailto:support@cadfocus.com.my) / [license@cadfocusmy.com](mailto:license@cadfocusmy.com)

## Step 2. Follow the screen instruction to proceed with the setup installation

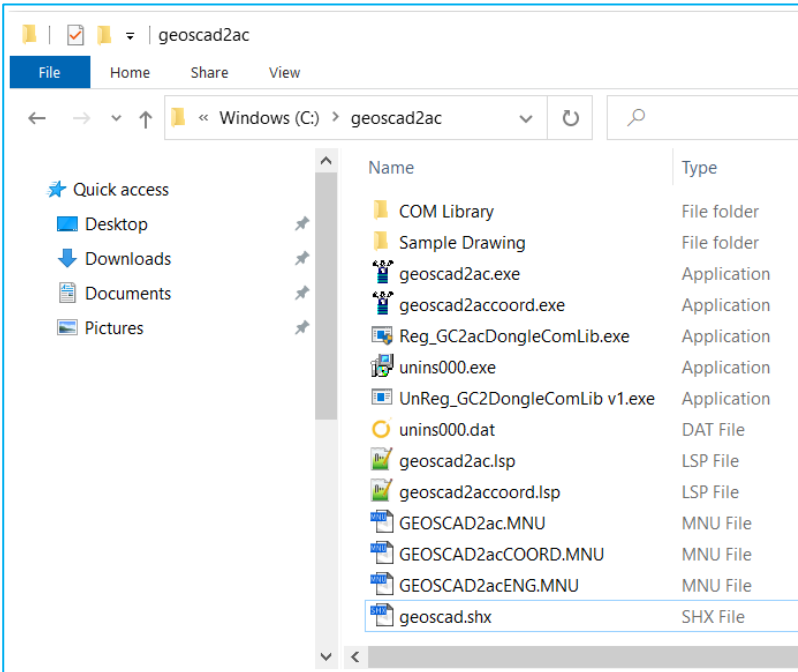






**Note:**

After the Installation setup process a new folder (**C:\geoscad2ac**) being created with the extracted files as shown below:

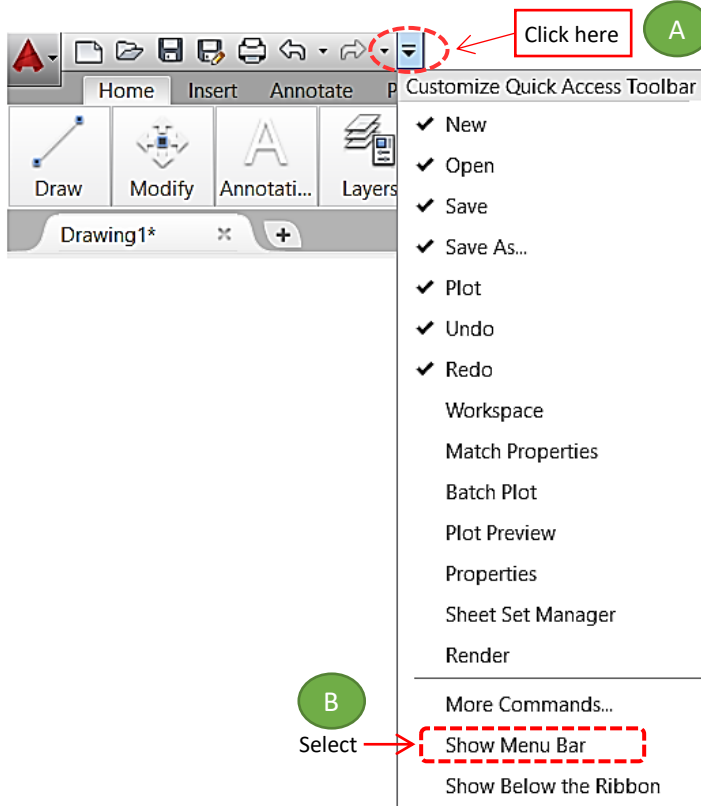


## Section B: Setup GEOsCAD2ac Menu in AutoCAD

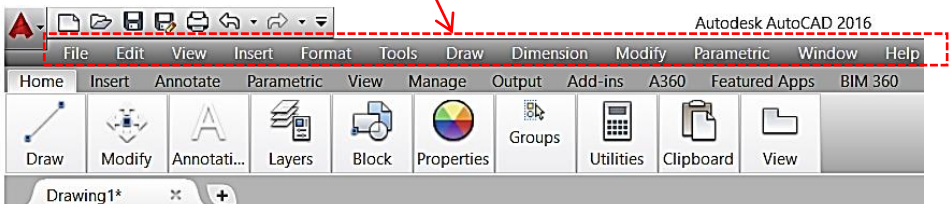
**\*\*Note:** If default user interface already in **Classic mode**, skip Step 2 ,and start with Step 3. If you are using *Ribbon* interface, start with Step 1.

Step 1. Run AutoCAD Application/ Software

Step 2. Click Quick Access Toolbar drop-down > Show Menu Bar.

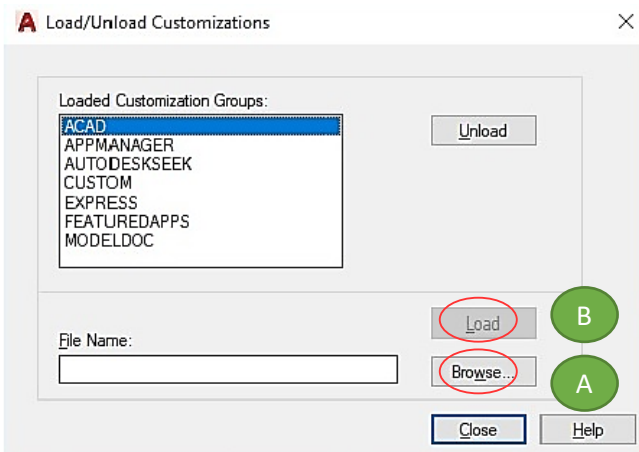


Menu bar

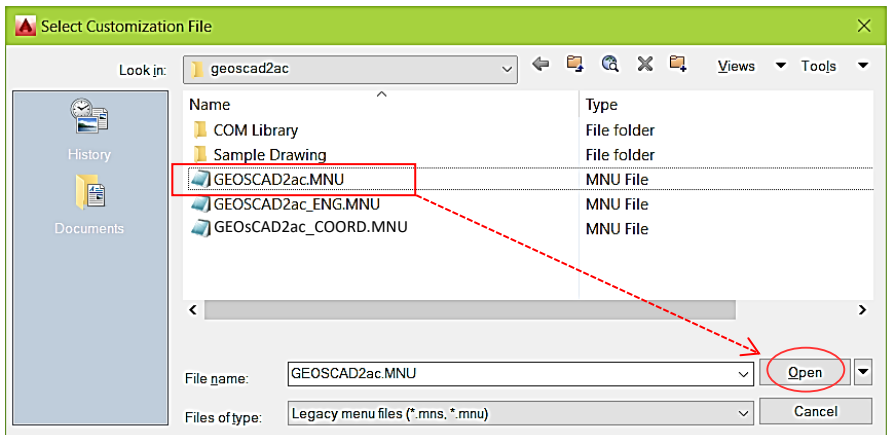


**Step 3.** Input “**MENULOAD**” command  
[Command: MENULOAD]

**Step 4.** ‘Load/Unload Customization’ dialog box appear.

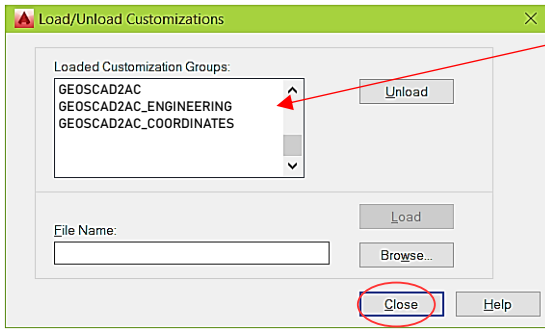


(A) Click ‘**Browse**’ and Go to **C:\geoscad2ac** folder and Open **GEOSCAD2ac.MNU**



(B) Click Load button

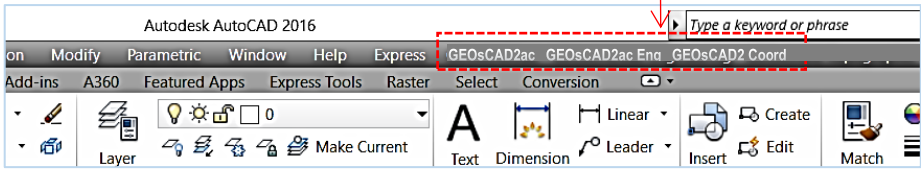
Repeat Steps A & B to for **GEOSCAD2acENG.MNU**,  
**GEOSCAD2acCOORD.MNU**



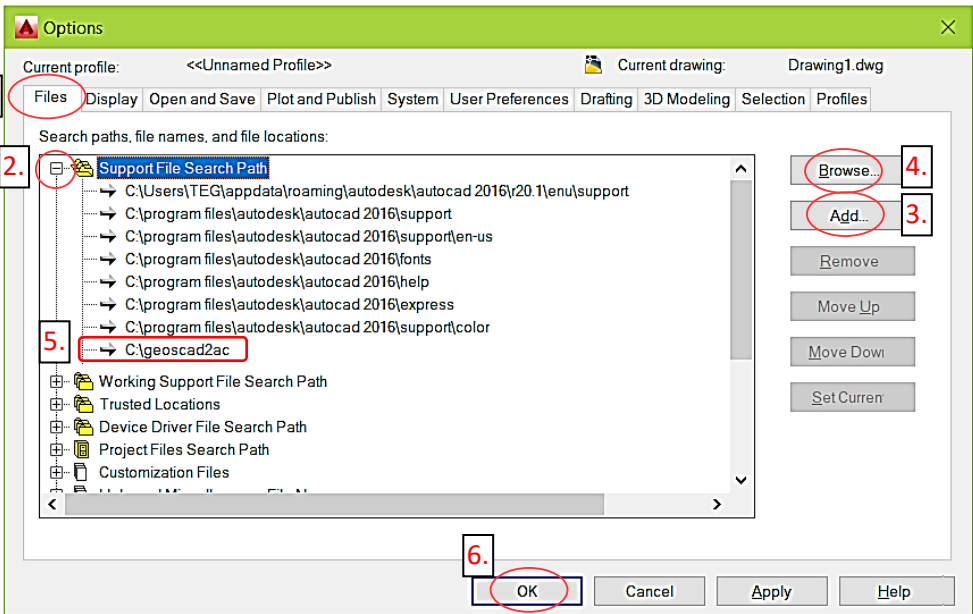
All of the Menu extensions are present in the "Loaded Customization tab."

The GEOsCAD2ac Menu.

**\*\*Upon Successfully menu load, pull-down menu should display as below**



(C) Add **C:\geoscad2ac** folder to AutoCAD Support File Search Path  
 Input **"Options"** command and follow below steps.



(D) Type **"SECURELOAD"** command prompt and set value to **"0"** (zero)  
 SECURELOAD Enter new value for SECURELOAD <1>:0 hit return

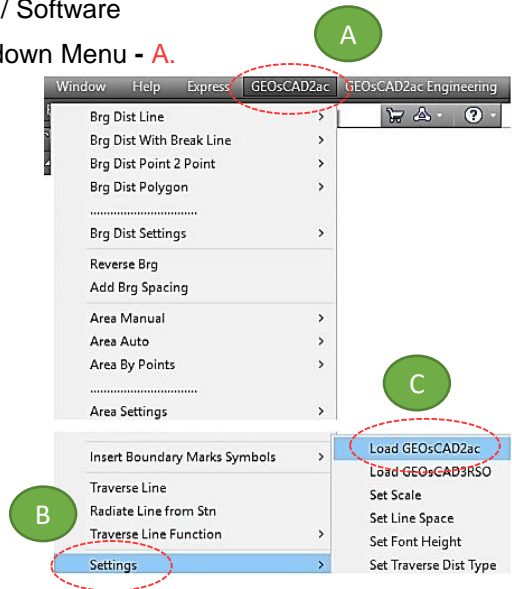
## Section C: Test Run GEOsCAD2ac software

Step 1. Launch AutoCAD Application/ Software

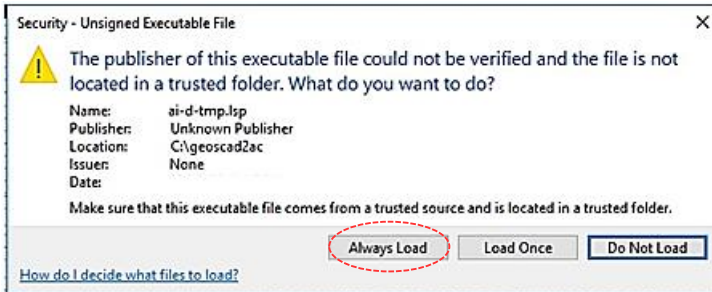
Step 2. Select **GEOsCAD2ac** Drop-down Menu - **A**.

Select **Settings** - **B**.

Select **Load GEOsCAD2ac** - **C**.



**\*\*Note:** If this message box appears for AutoCAD 2014 and above, select **“Always Load”**



Step 3. Press F2 key to change to AutoCAD Text Window.

**\*\*Below image indicate GEOsCAD2 v.22 is successfully loaded.**

```
Command: (Startapp "c:/geoscad2ac/geoscad2ac.exe") 33
Command: (load "c:\\geoscad2ac\\ai-d-tmp.lsp")
< * Encrypted by www.ai-d.com * >
Access SecureDongle COM module Success
Built version v.24(3.28b)
GEOsCAD2 v.24 For AutoCAD
Product AutoCAD check passed AutoCAD 2018 - 2024
Precomp scale: 1000
Precomp font height: 1.6
Precomp font width: 0.85
Precomp line space: 1 (for BD usage only)
Copyright (c) 2016-2023 Cad Focus Sdn. Bhd. /all right Reserved. www.cadfoc.com.my
```



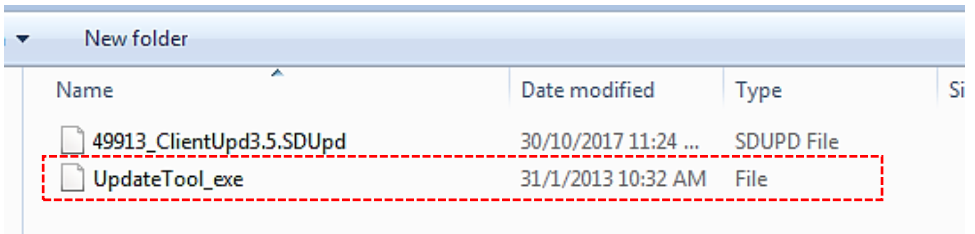
## Section D: GEOsCAD2ac Dongle Upgrade

**\*\* Only Applicable for Upgrade Purchase where customer having previous version of GEOsCAD2 dongle\*\***

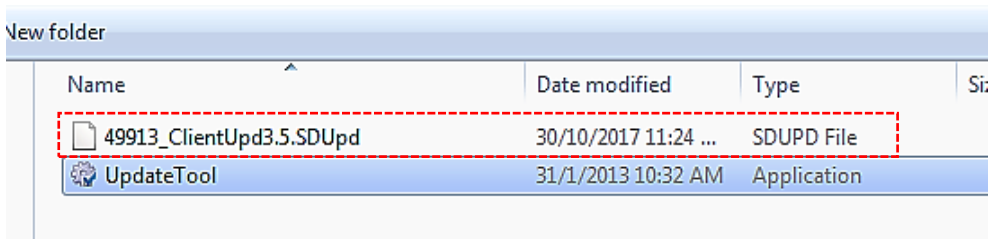
**Step 1.** Insert GEOsCAD2 Dongle in the USB port

**Step 2.** Download and unzip the “Dongle\_Upd.zip” file

**Step 3.** Rename the **UpdateTool\_exe** to **UpdateTool.exe**

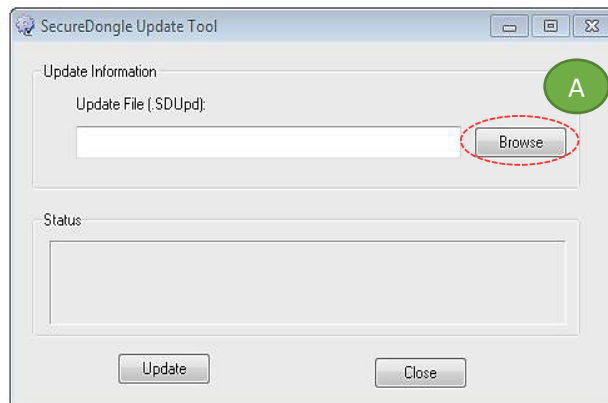


**Step 4.** Double click on the **UpdateTool.exe**

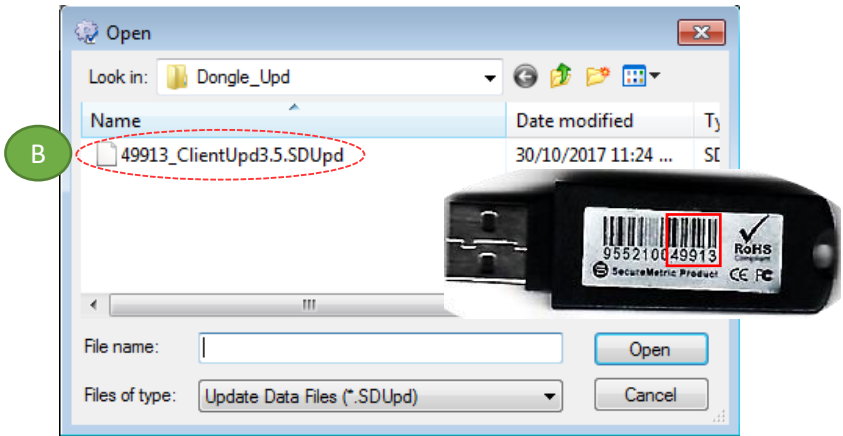


**Step 5.** ‘SecureDongle Update Tool’ dialog box appeared.

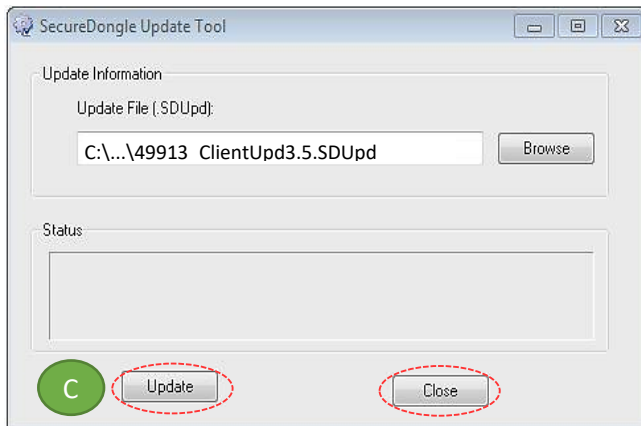
(A) Click ‘Browse’



(B) Locate the update file correspond to Dongle code [eg. 48296\_ClientUpd3.5.SDUpd]



(C) Click 'Update' follow by 'Close'



**Step 6.** If **Success**, Open ZWCAD Application / Software and test run on GEOCAD2

**CAD FOCUS Sdn Bhd**

Suite D-5-16, Level 5 Vivo Block D, Southgate Commercial Centre Off Jalan Chan Sow Lin, 55200 Kuala Lumpur. Tel:03 9223-1918 Fax:03 9221-6900 Website [www.cadfocus.com.my](http://www.cadfocus.com.my)

Facebook: [www.facebook.com/ZWCAD.cadfocus](http://www.facebook.com/ZWCAD.cadfocus)