

Index

Section A: Installation of GEOsCAD2 Std 1
Section B: Setup GEOsCAD2 Menu in ZWCAD 5
Section C: Test Run GEOsCAD2 software 6
Section D: GEOsCAD2 Dongle Upgrade 7

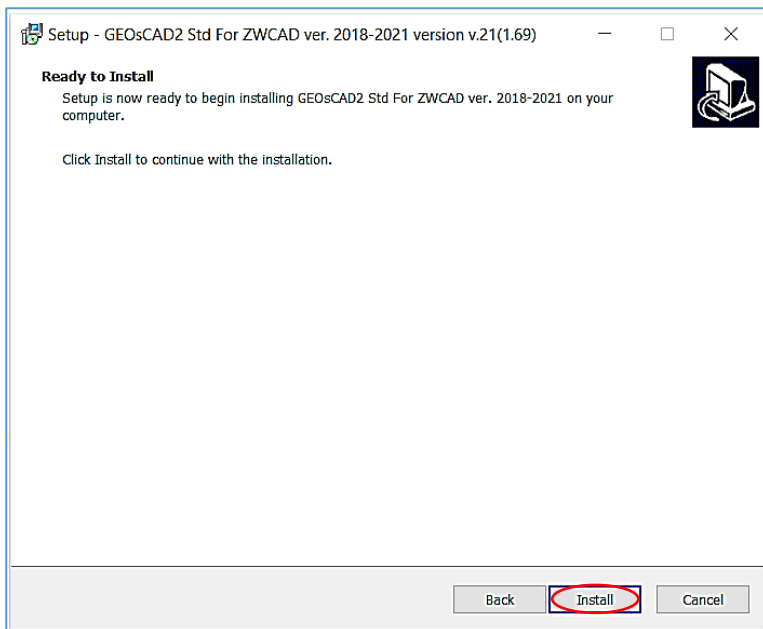
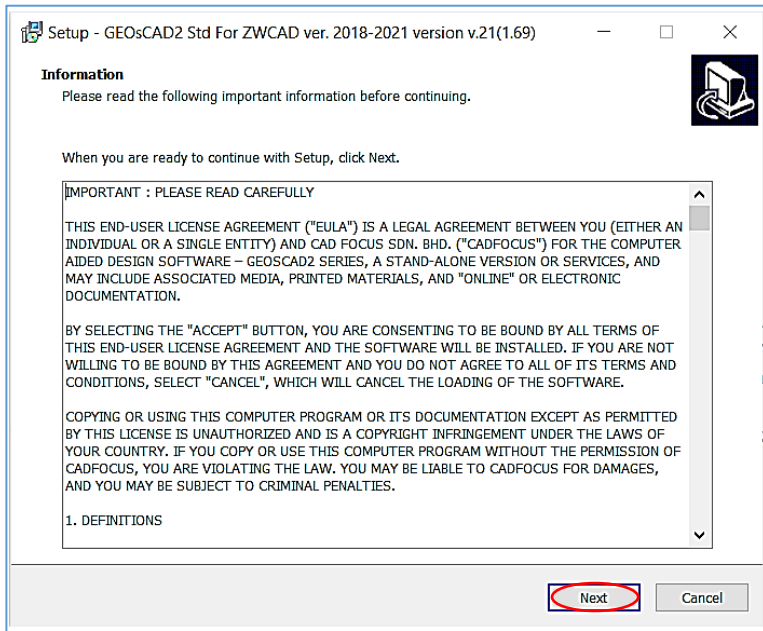
Section A: Installation of GEOsCAD2 Std

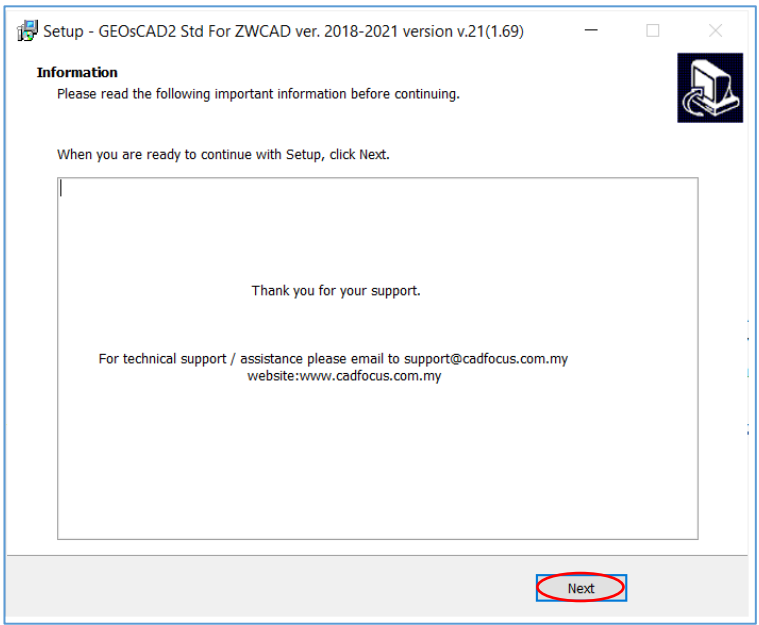
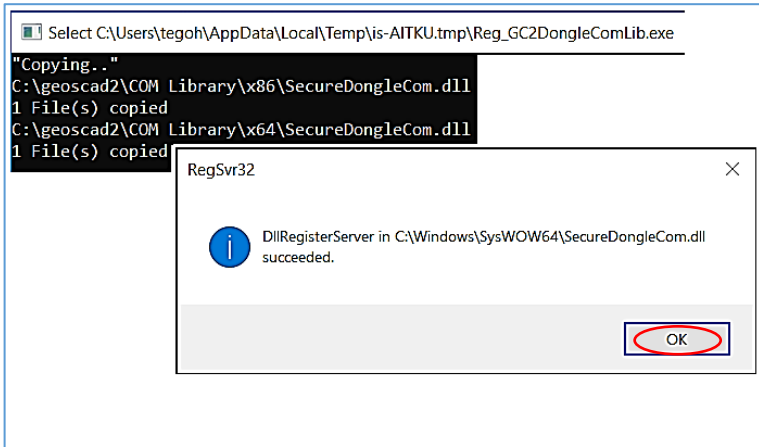
Step 1. Insert GEOsCAD2 Product CD,
browse to CD Drive...**\\GEOsCAD2 For ZWCAD\\v.21** folder
and double left mouse click on **“GC2v21_zw_64-bit_Setup.exe”**
to start the installation.

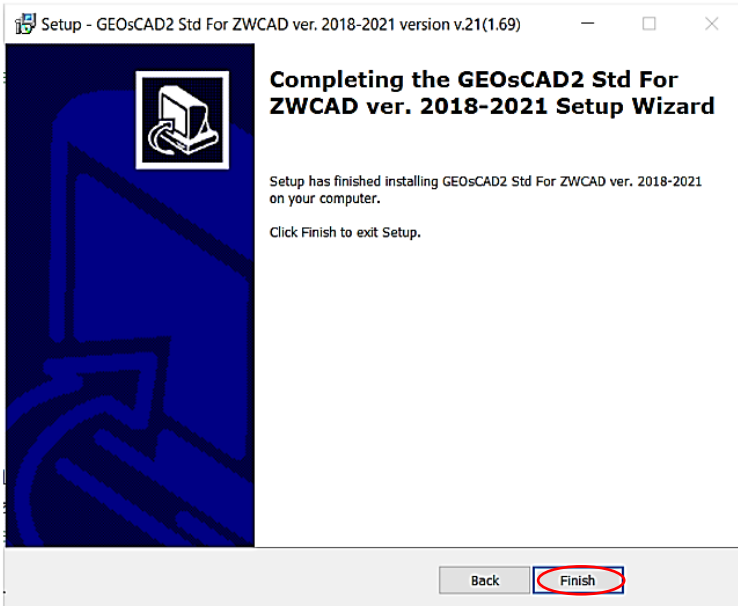
Note:

If do not have / lost product CD send an email to below address to request for **“GC2v21_zw_64-bit_Setup.exe”** download link.
support@cadfocus.com.my / license@cadfocusmy.com

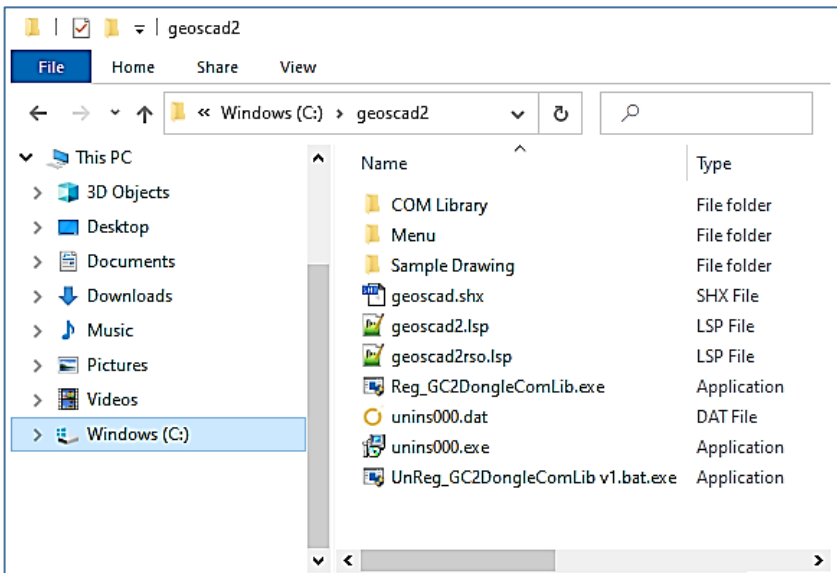
Step 2. Follow the screen instruction to proceed with the setup installation







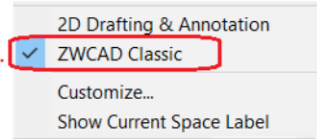
Note: After the Installation setup process a new folder (**C:\geoscad2**) being created with the extracted files as shown below:



Section B: Setup GEOsCAD2 Menu in ZWCAD

Step 1. Run ZWCAD Application/ Software

Step 2. Switch ZWCAD User Interface to ZWCAD Classic view.

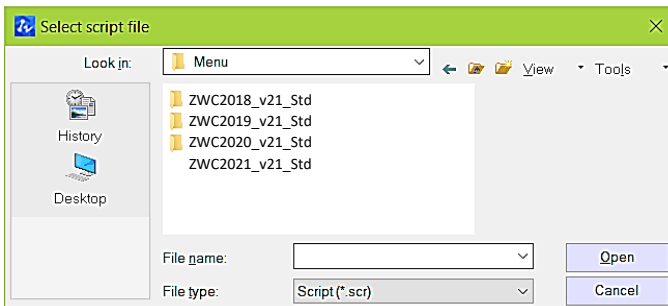


Step 3. Input “**SCRIPT**” command
[Command: SCRIPT]



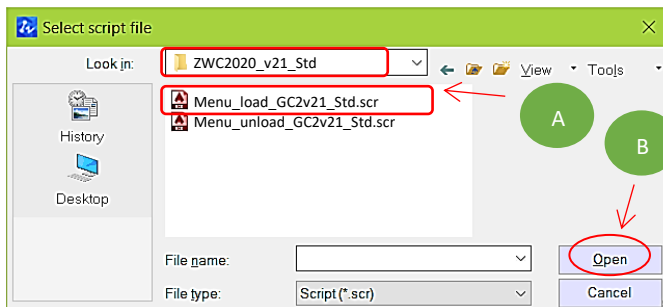
Step 4. 'Select script file' dialog box appear.

i) Browse to **C:\geoscad2\Menu**

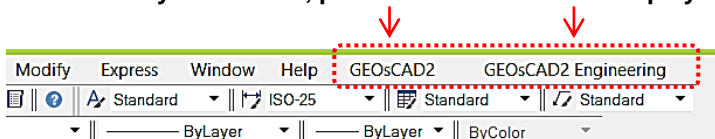


ii) Please confirm the correct ZWCAD version installed and Go to respective version folder eg.

ZWCAD 2020 goto **ZWC2020_v21_Std** folder (A) follow by select **Menu_load_GC2v21_Std.scr** (A) and click **Open** button (B).



****Upon Successfully menu load, pull-down menu should display as below**



Section C: Test Run GEOsCAD2 software

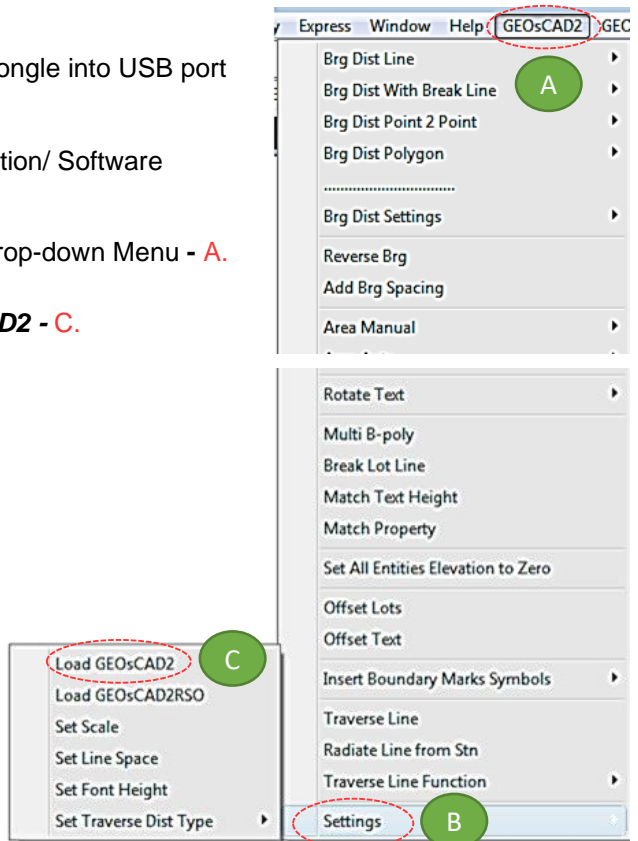
Step 1. Insert GEOsCAD2 Dongle into USB port

Step 2. Run ZWCAD Application/ Software

Step 3. From **GEOsCAD2** Drop-down Menu - **A**.

Select **Settings** - **B**.

Follow by **Load GEOsCAD2** - **C**.



Step 4. Press F2 key to change to ZWCAD Text Window

**Below image indicate GEOsCAD2 Std v.21 is successfully loaded.

```
ZWCAD Text Window - Drawing1.dwg
Command: (load "c:/geoscad2/geoscad2.lsp")
Access SecureDongle COM module Success
Built version v.21(169)
v.21z
Precomp scale:          1000
Precomp font height    1.6
Precomp font width:    0.85
Precomp line space:    1 (for BD usage only)
Copyright (c) 2016-2021 Cad Focus Pte. Ltd. All Rights Reserved. GEOsCAD2 v.21_(169)nil
Command:
```

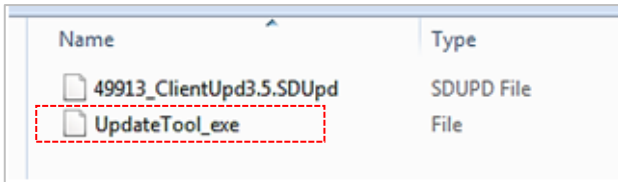
Section D: GEOsCAD2 Dongle Upgrade

**** Only Applicable for Upgrade Purchase where customer having previous version of GEOsCAD2 dongle ****

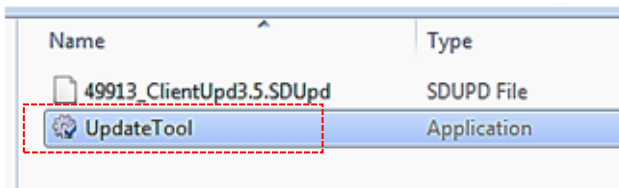
Step 1. Insert GEOsCAD2 Dongle in the USB port

Step 2. Download and unzip the “Dongle_Upd.zip” file

Step 3. Rename the **UpdateTool_exe** to **UpdateTool.exe**

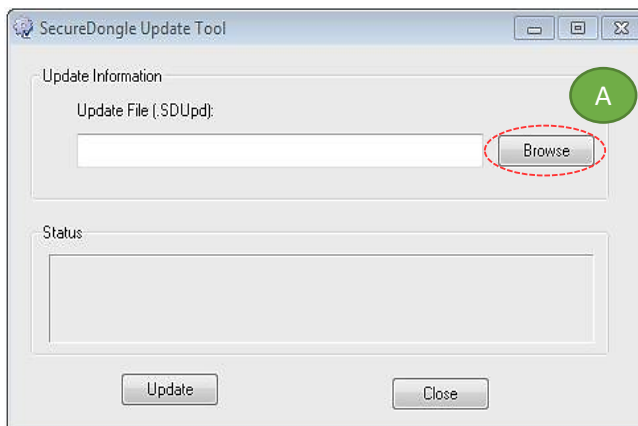


Step 4. Double click on the **UpdateTool.exe**

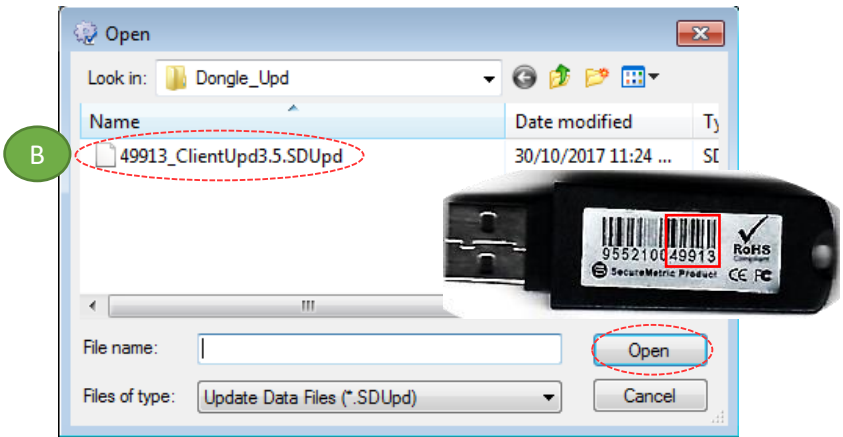


Step 5. ‘SecureDongle Update Tool’ dialog box appeared.

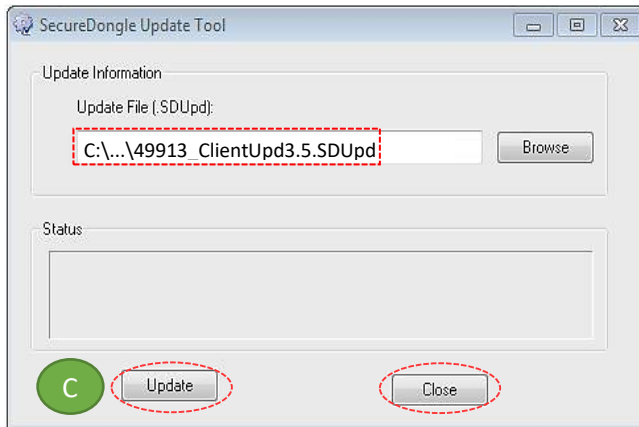
(A) Click ‘Browse’



(B) Locate the update file correspond to Dongle code, Select file follow by Open [eg. 48296_ClientUpd3.5.SDUdp]



(C) Click 'Update' follow by 'Close'



Step 6. If **Success**, Open ZWCAD Application / Software and test run on GEOCAD2

CAD FOCUS Sdn Bhd

Suite D-5-16, Level 5 Vivo Block D, Southgate Commercial Centre Off Jalan Chan Sow Lin, 55200 Kuala Lumpur. Tel:03 9223-1918 Fax:03 9221-6900 Website www.cadfocus.com.my

Facebook: www.facebook.com/ZWCAD.cadfocus