

Index

Section A: Installation of GEOsCAD2 Pro 1

Section B: Setup GEOsCAD2ac Menu in AutoCAD..... 5

Section C: Test Run GEOsCAD2ac software 8

Section D: GEOsCAD2ac Dongle Upgrade 9

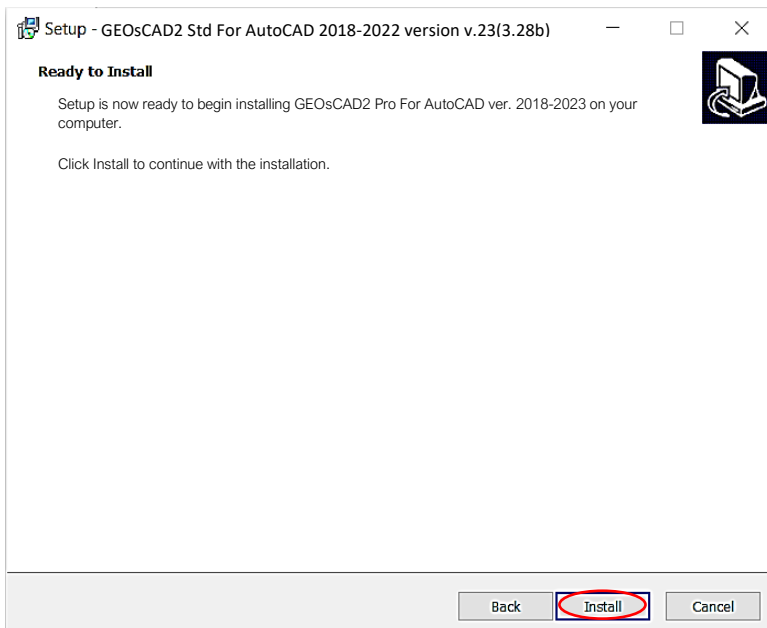
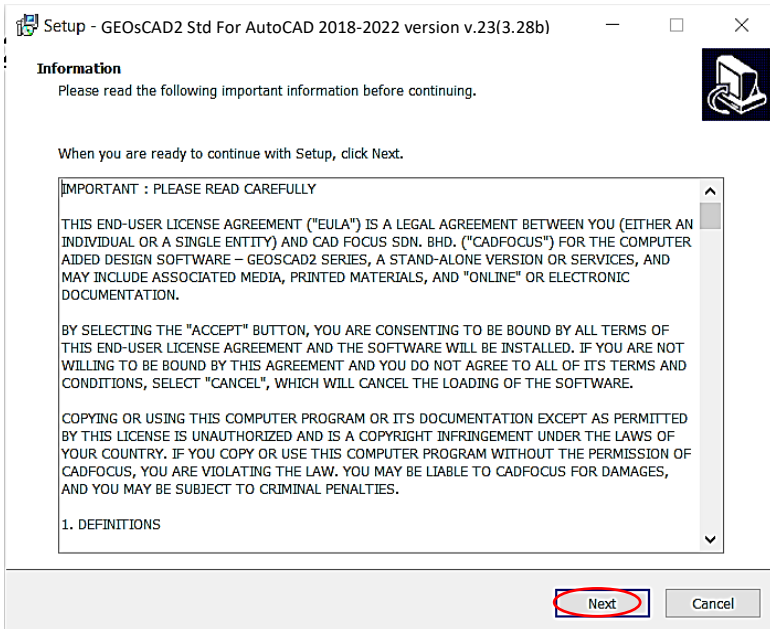
Section A: Installation of GEOsCAD2 Pro

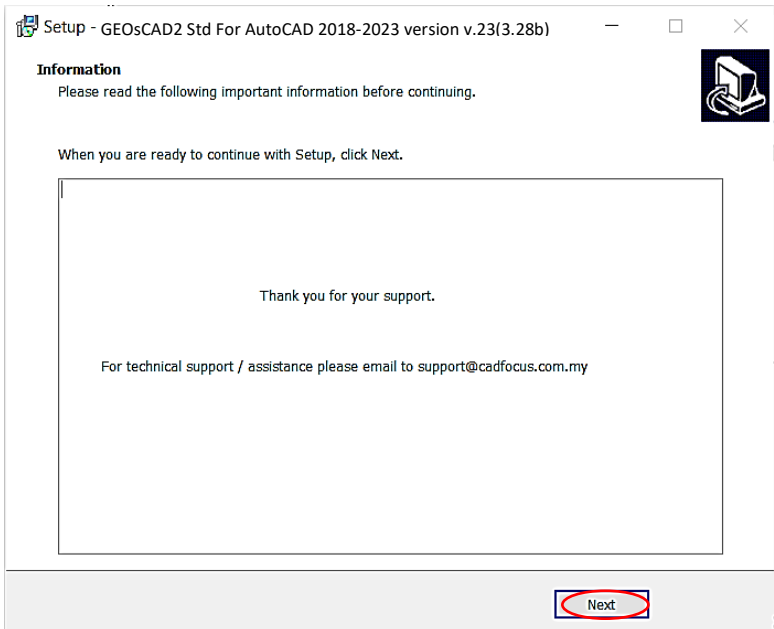
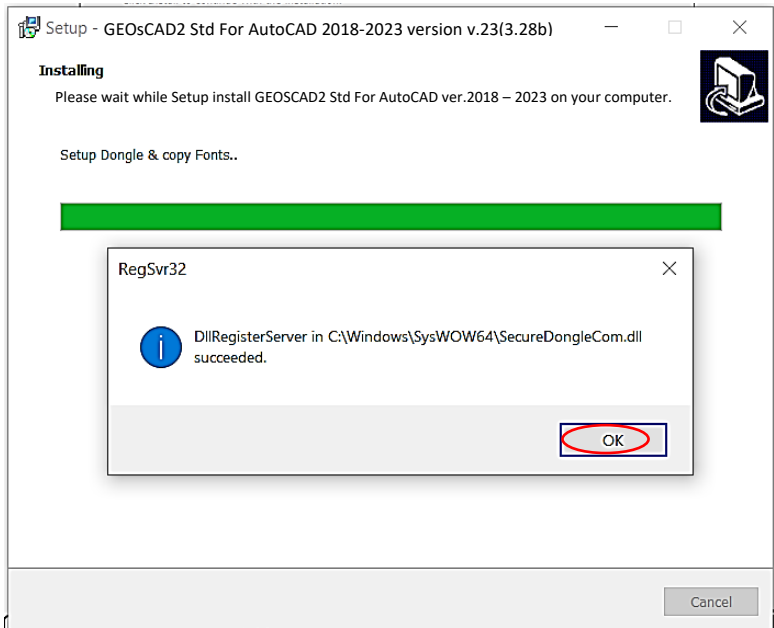
Step 1. Insert GEOsCAD2 Product CD,
browse to CD Drive...\GEOsCAD2 For AutoCAD\v.23\ folder
and double left mouse click on “**GC2v23_ac_64-bit_Setup.exe**”
to start the installation.

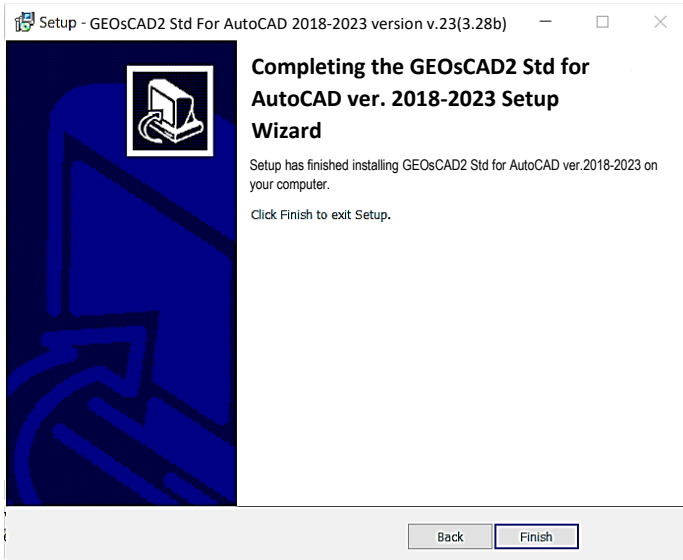
Note:

If do not have / lost product CD send an email to below address to request for “**GC2v23_ac_64-bit_Setup.exe**” download link.
support@cadfocus.com.my / license@cadfocusmy.com

Step 2. Follow the screen instruction to proceed with the setup installation

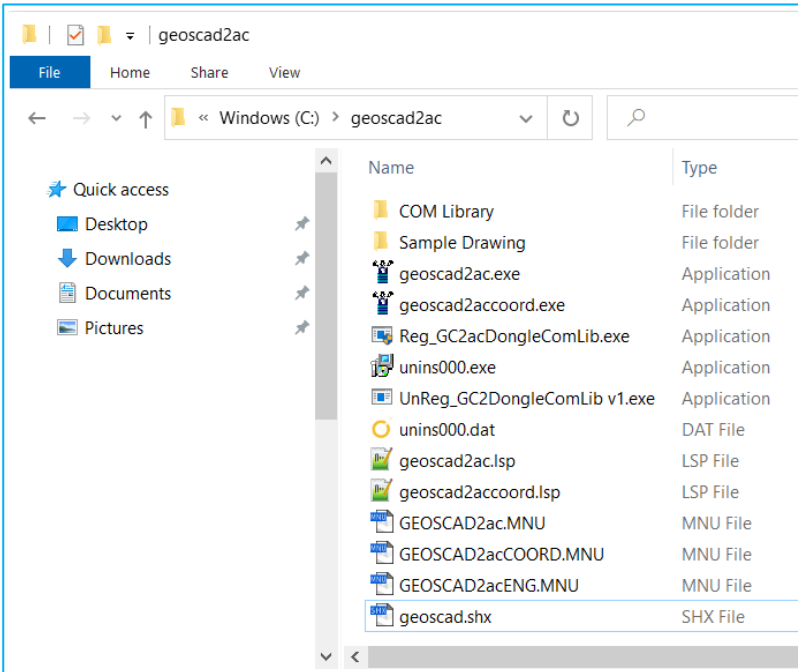






Note:

After the Installation setup process a new folder (**C:\geoscad2ac**) being created with the extracted files as shown below:

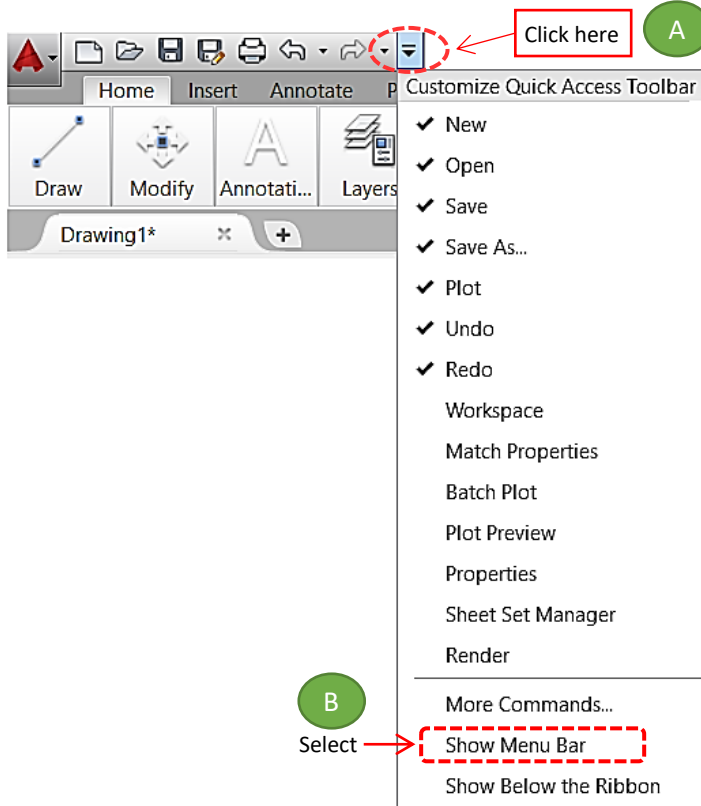


Section B: Setup GEOsCAD2ac Menu in AutoCAD

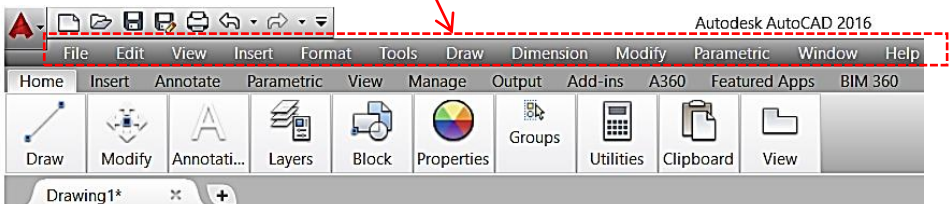
****Note:** If default user interface already in **Classic mode**, skip Step 2, and start with Step 3. If you are using *Ribbon* interface, start with Step 1.

Step 1. Run AutoCAD Application/ Software

Step 2. Click Quick Access Toolbar drop-down > Show Menu Bar.

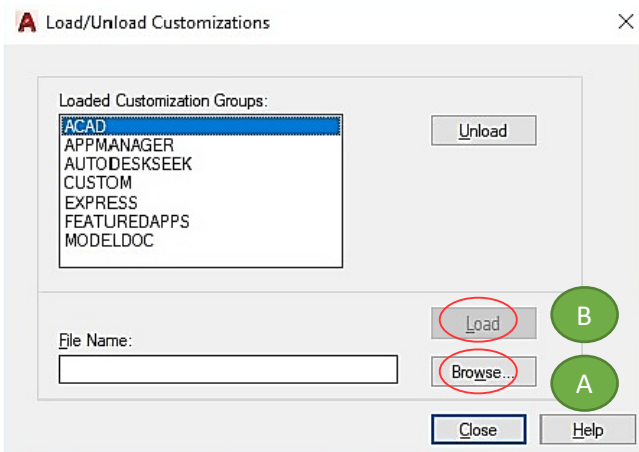


Menu bar

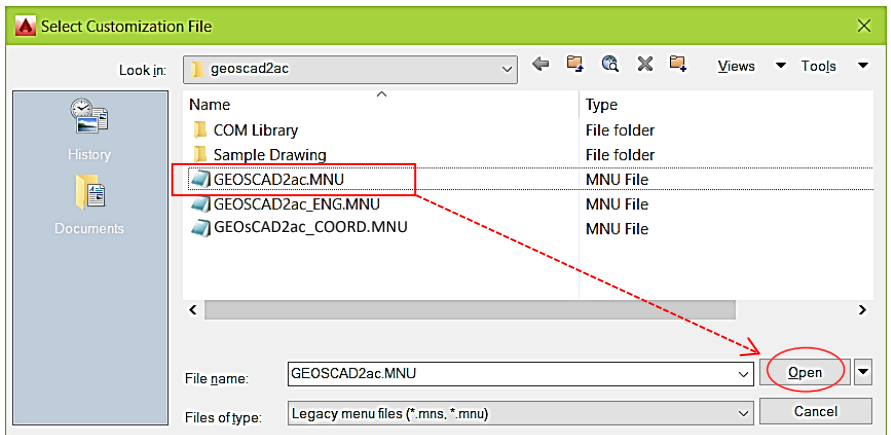


Step 3. Input “**MENULOAD**” command
[Command: MENULOAD]

Step 4. ‘Load/Unload Customization’ dialog box appear.

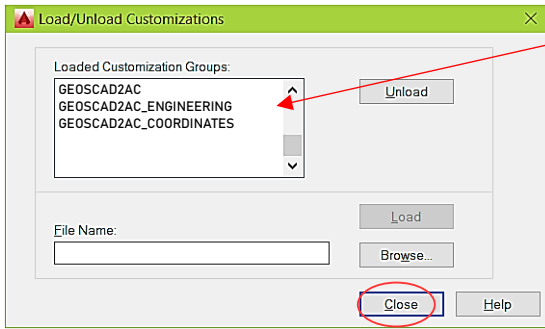


(A) Click ‘**Browse**’ and Go to **C:\geoscad2ac** folder and Open **GEOSCAD2ac.MNU**



(B) Click Load button

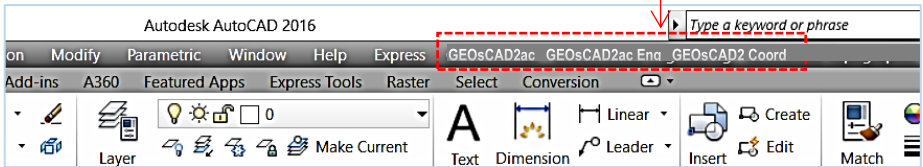
Repeat Steps A & B to for **GEOSCAD2acENG.MNU**,
GEOSCAD2acCOORD.MNU



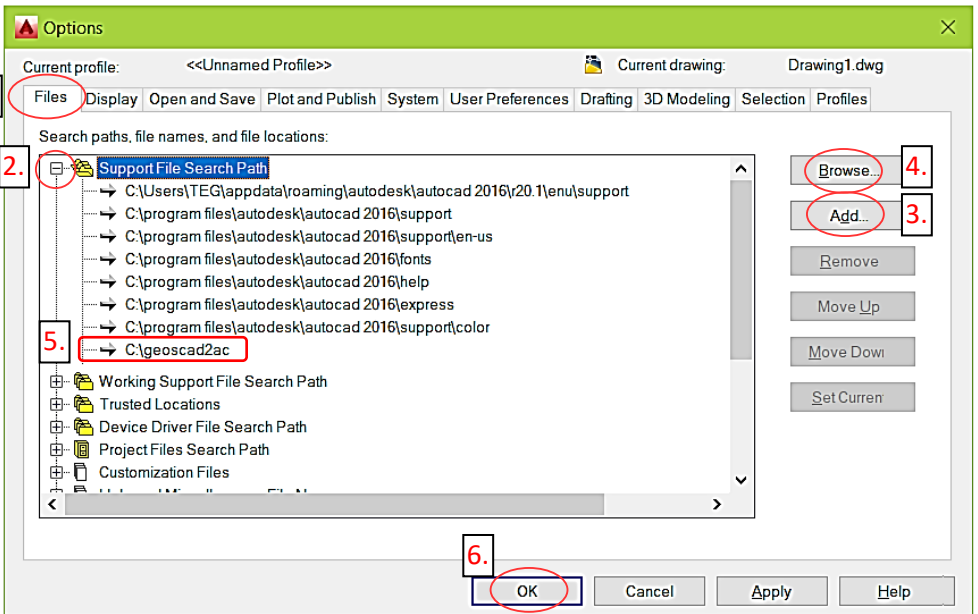
All of the Menu extensions are present in the "Loaded Customization tab."

The GEOsCAD2ac Menu.

****Upon Successfully menu load, pull-down menu should display as below**



(C) Add **C:\geoscad2ac** folder to AutoCAD Support File Search Path
 Input **"Options"** command and follow below steps.



(D) Type **"SECURELOAD"** command prompt and set value to **"0"** (zero)
 SECURELOAD Enter new value for SECURELOAD <1>:0 hit return

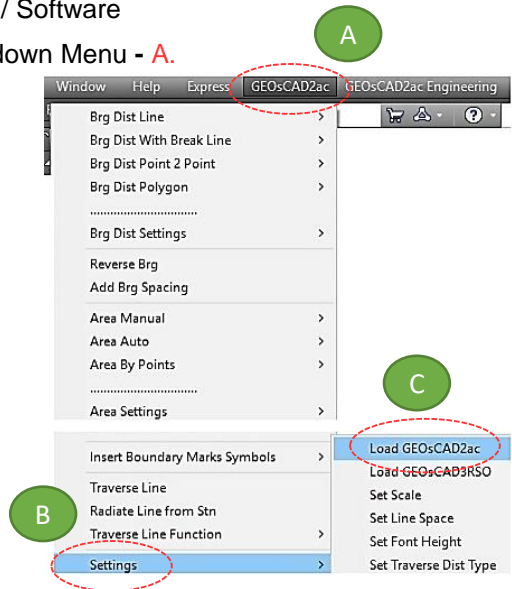
Section C: Test Run GEOsCAD2ac software

Step 1. Launch AutoCAD Application/ Software

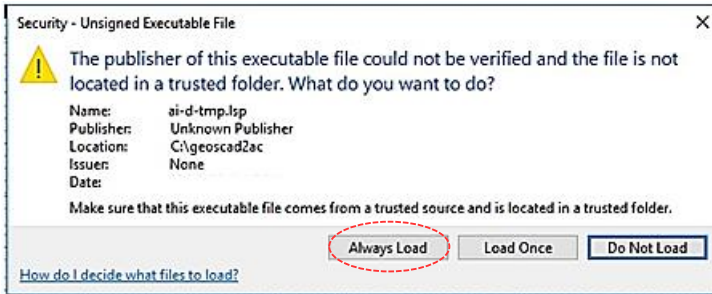
Step 2. Select **GEOsCAD2ac** Drop-down Menu - **A**.

Select **Settings** - **B**.

Select **Load GEOsCAD2ac** - **C**.



****Note:** If this message box appears for AutoCAD 2014 and above, select **“Always Load”**



Step 3. Press F2 key to change to AutoCAD Text Window.

****Below image indicate GEOsCAD2 v.22 is successfully loaded.**

```
Command: (Startapp "c:/geoscad2ac/geoscad2ac.exe") 33
Command: (load "c:\\geoscad2ac\\ai-d-tmp.lsp")
<* Encrypted by www.ai-d.com *>
Access SecureDongle COM module Success
Built version v.22(3.28b)
GEOsCAD2 v.22 For AutoCAD
Product AutoCAD check passed AutoCAD 2018 - 2022
Precomp scale: 1000
Precomp font height: 1.6
Precomp font width: 0.85
Precomp line space: 1 (for BD usage only)
Copyright (c) 2016-2021 Cad Focus Sdn. Bhd. /all right Reserved. www.cadfocus.com.my
```

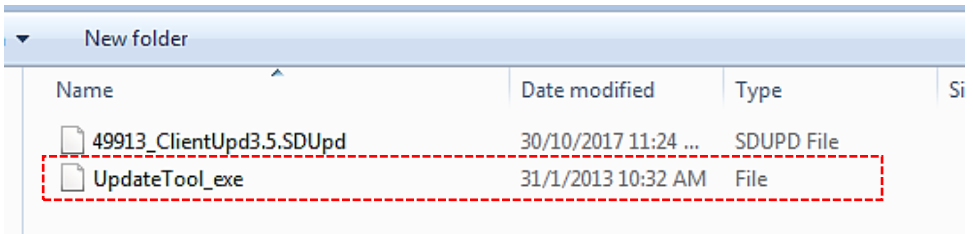

Section D: GEOsCAD2ac Dongle Upgrade

**** Only Applicable for Upgrade Purchase where customer having previous version of GEOsCAD2 dongle****

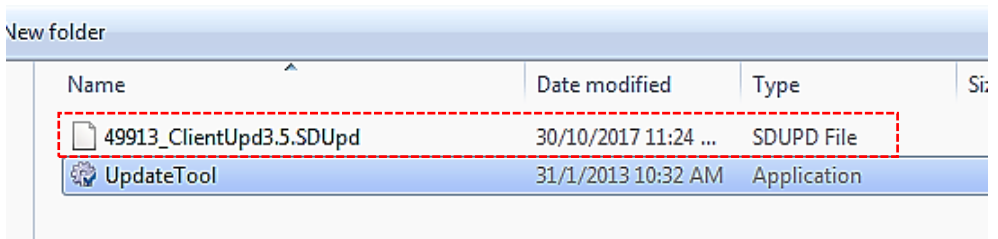
Step 1. Insert GEOsCAD2 Dongle in the USB port

Step 2. Download and unzip the “Dongle_Upd.zip” file

Step 3. Rename the **UpdateTool_exe** to **UpdateTool.exe**

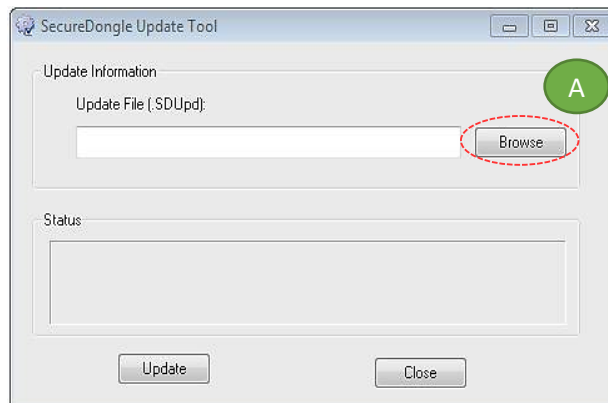


Step 4. Double click on the **UpdateTool.exe**

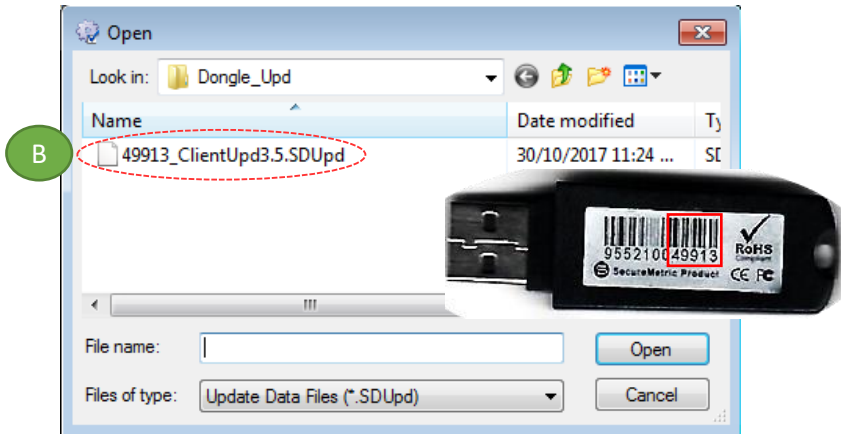


Step 5. ‘SecureDongle Update Tool’ dialog box appeared.

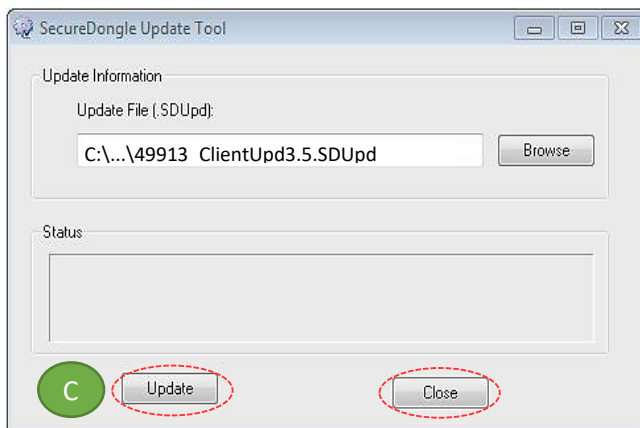
(A) Click ‘Browse’



- (B) Locate the update file correspond to Dongle code
[eg. 48296_ClientUpd3.5.SDUpd]



- (C) Click 'Update' follow by 'Close'



Step 6. If **Success**, Open ZWCAD Application / Software and test run on GEOCAD2

CAD FOCUS Sdn Bhd

Suite D-5-16, Level 5 Vivo Block D, Southgate Commercial Centre Off Jalan Chan Sow Lin, 55200 Kuala Lumpur. Tel:03 9223-1918 Fax:03 9221-6900 Website www.cadfocus.com.my

Facebook: www.facebook.com/ZWCAD.cadfocus