

About ZWCAD

ZWCAD is a cost-effective, DWG file format compatible CAD solution developed by ZWCAD Software Co., Ltd.. It provides innovative, collaborative and customizable features for engineers in the AEC and MCAD industries, easing their design process.

ZWCAD is now available in 15 languages, including Simplified and Traditional Chinese, Czech, English, French, German, Italian, Japanese, Hungarian, Korean, Polish, Portuguese, Spanish, Russian and Turkish.

Over 550,000 satisfied users across 80 countries



ZWCAD Software Co., Ltd.

Add: 32/F, Pearl River Tower, No.15, Zhujiang West Road, Tianhe District, Guangzhou 510623, P.R.China
Tel.: +86-20-38289780 Fax: +86-20-38288676
Email: sales@zsoft.com

www.zsoft.com

ZWCAD Reseller

All trademarks, trade names or company names referenced herein are used for identification only, and belong to their respective holders.

Copyright 2008 - 2018 ZWCAD Software Co., Ltd.. All rights reserved.

Reproduction in any form without the permission of the copyright holder is prohibited by law.



ZWCAD

Design Great



ZWSOFT



Top 5 Reasons to Choose ZWCAD



1 Seamless DWG Compatibility



2 Code-level compatible APIs and easy to migrate



3 Flexible workflow between desktop and mobile devices



4 Extra efficiency with micro innovations



5 Non-expiring perpetual license with latest version upgrade

Familiar CAD

- Seamlessly compatible with DWG files
- Familiar Classic and Ribbon interfaces, you can easily switch to choose the environment you prefer
- Familiar commands and alias



ZWCAD Features

2D Drafting

1

- Auto-complete Command Entry
- MText
- Images
- Block
- External Reference
- MLeaders
- Table
- Associative Dimension
- Revision Cloud
- Layer Properties Manager
- Attribute Block

Advanced Tools

5

- Tool Palettes
- Dynamic Block
- Reference Manager
- Block Attribute Manager
- Super Hatch
- File Compare
- Quick Calculator
- Extract Attribute
- Layer States Manager
- Insert OLE Object
- Import DGN
- Match Properties
- Lock Up Drawing
- Overkill

Micro Innovation

10

- SmartMouse
- SmartVoice
- SmartSelect
- Barcode & QR Code
- Lightweight

3D Modeling

12

- Modeling
- Visualizing
- Viewing

Output & Share

13

- Print with STB/CTB plot style
- Print or publish in other formats

14

- Industry Solutions

15

- From Desktop to Mobile

16

- ZWCAD vs ACAD

17

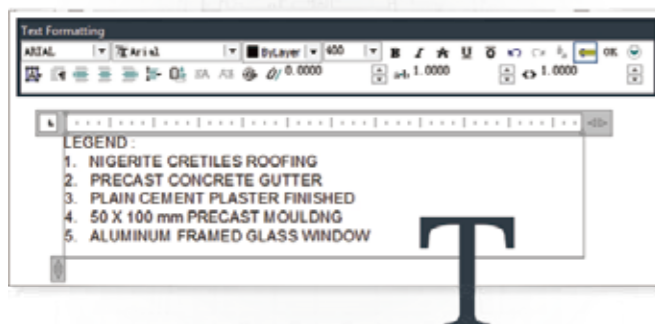
- See How CAD Experts & Users Comment on ZWCAD



2D Drafting

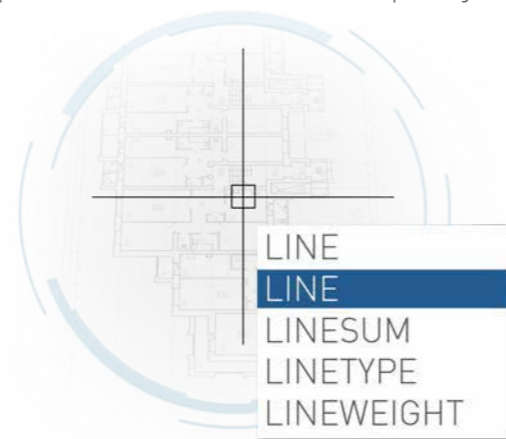
MText

Multi-line text, full text editing functions



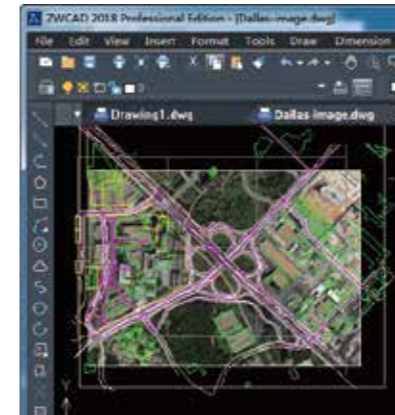
Auto-complete Command Entry

Help to find commands more quickly



Images

Insert raster images, supports formats like JPEG, PNG and BMP



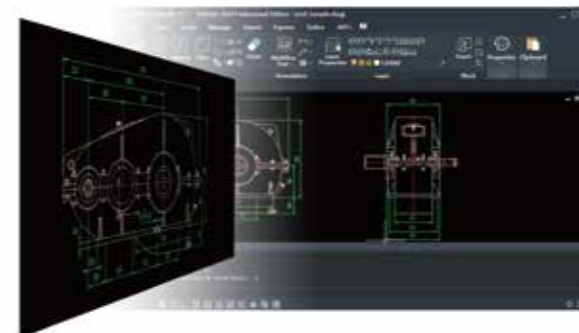
Block

Collect geometry together into one object which you can use repeatedly



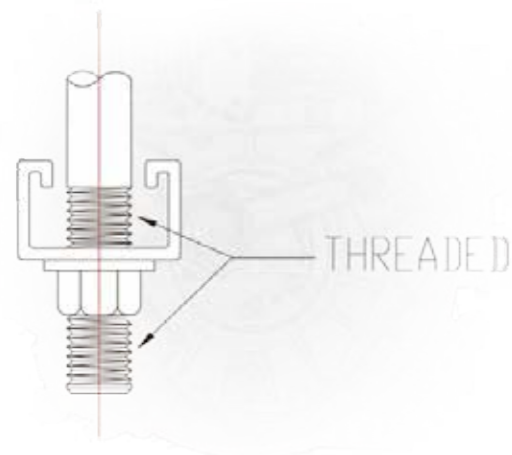
External Reference

Attach other DWG drawings as references



MLeaders

Attach multi-leader annotations



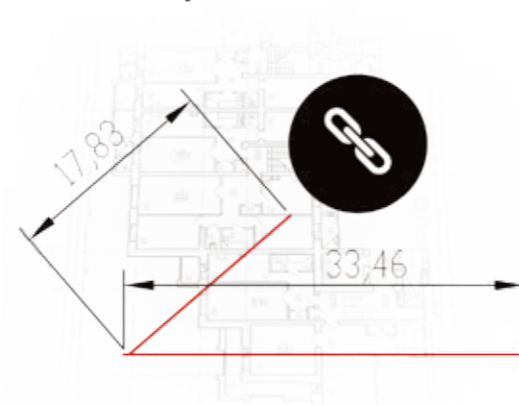
Table

Use table to present data like revision table or bill of materials

CONC. PILE SCHEDULE			
MARK	PILE NO.	LENGTH	VERTICAL REINFORCEMENT
P-1	16[406]	25'-0"[7620]	4-15Mx19'-0"[5791]
P-2	16[406]	30'-0"[9144]	4-15Mx23'-0"[7010]
P-3	16[406]	34'-0"[10363]	4-15Mx26'-0"[7925]
P-4	16[406]	38'-0"[11582]	4-15Mx32'-0"[9754]
P-5	24[610]	32'-0"[9754]	6-20Mx24'-0"[7315]
P-6	24[610]	36'-0"[10973]	6-20Mx27'-0"[8230]

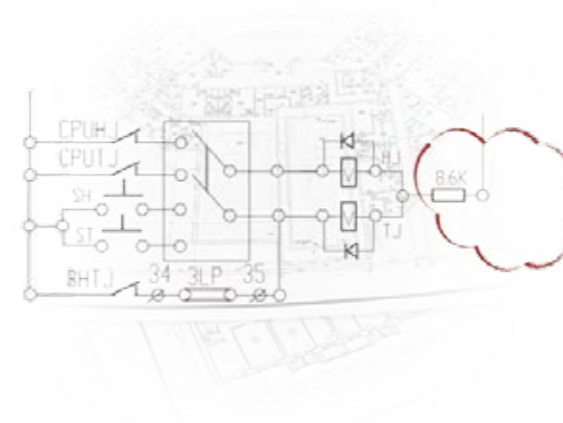
Associative Dimension

Dimension adjusted along with the geometric objects



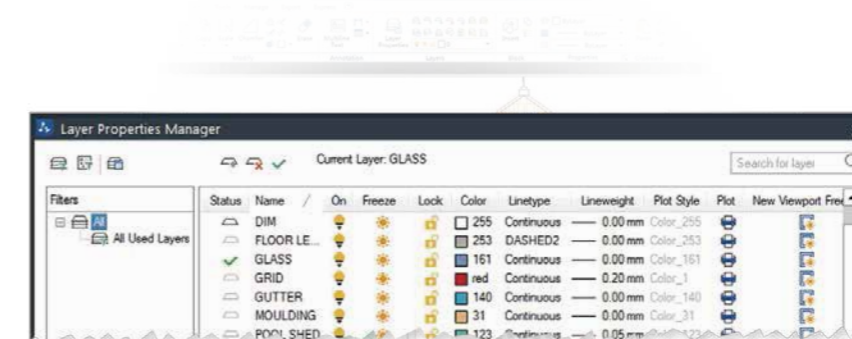
Revision Cloud

Mark the revision items with free-form clouds around them and call attention to them



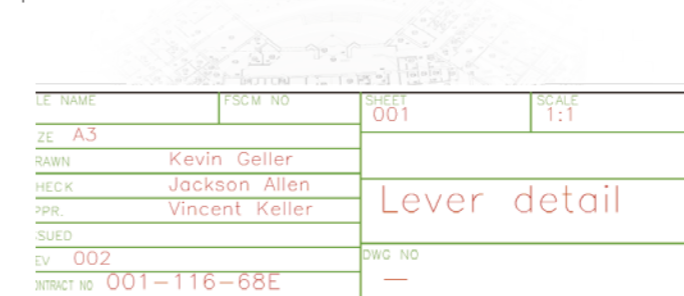
Layer Properties Manager

Set layer properties like color, linetype and VP Freeze



Attribute Block

Block embeds textual information such as inventory numbers, prices, description and more

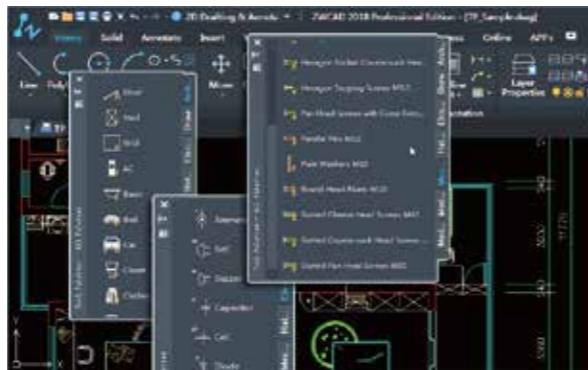


5

Advanced Tools

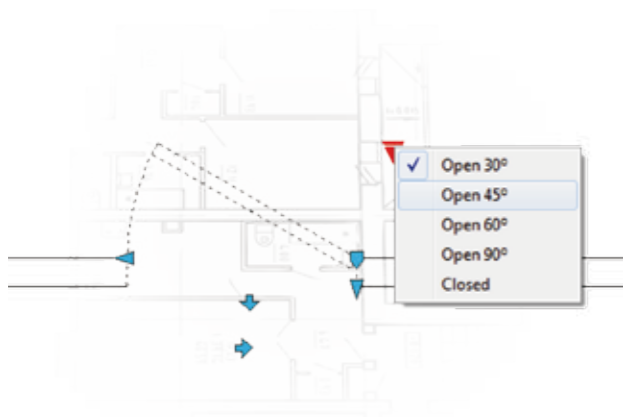
Tool Palettes

Organize, share, and place commands, blocks, and other tools



Dynamic Block

Block with parameters, easy to modify



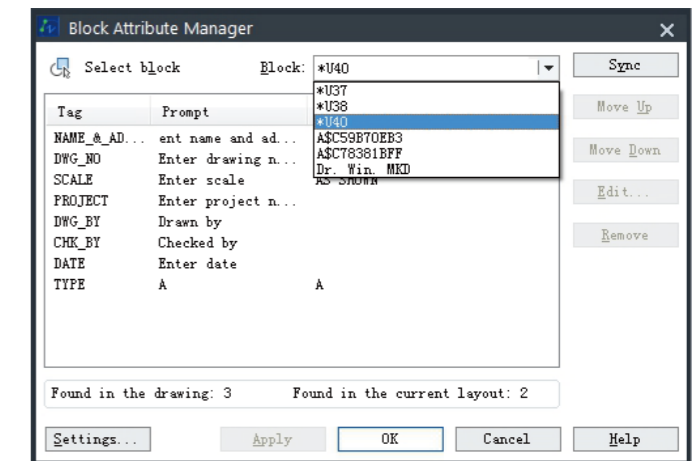
Reference Manager

Manage all external resources like text, image and drawing



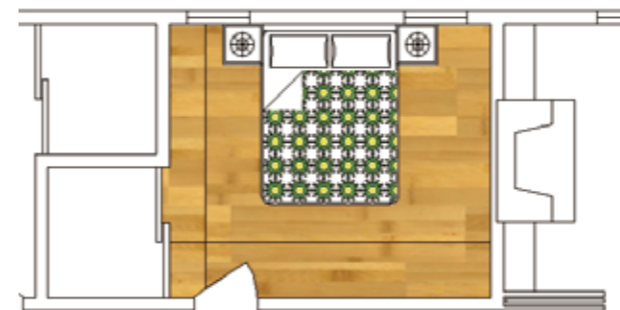
Block Attribute Manager

View, edit and synchronize attributes in batches



Super Hatch

Use block, external drawing, or image as hatch pattern



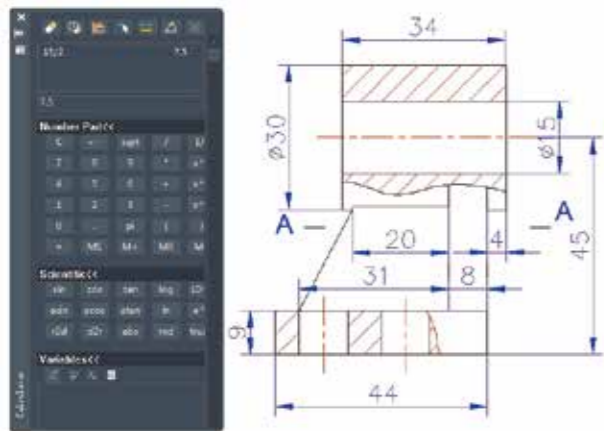
File Compare

Compare two similar drawings and highlight the differences



Quick Calculator

Perform calculation within CAD just as you would with a desktop calculator



Extract Attribute

Extract attribute information to a csv/xls/mdb/txt file



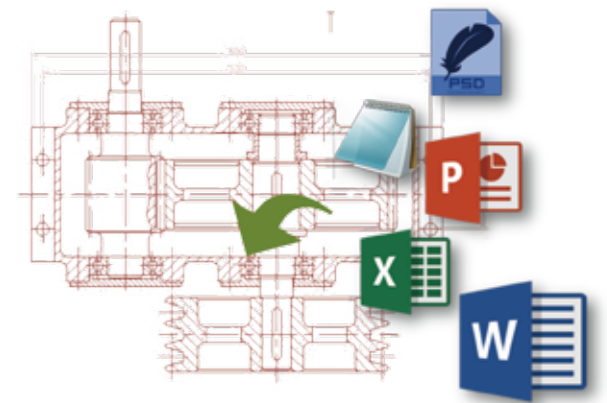
Layer States Manager

Save the layer states and restore with one click, layer settings can be easily changed



Insert OLE Object

Use document from other applications



Import DGN

Exchange drawing with MicroStation®



Match Properties

Apply existing style to other objects



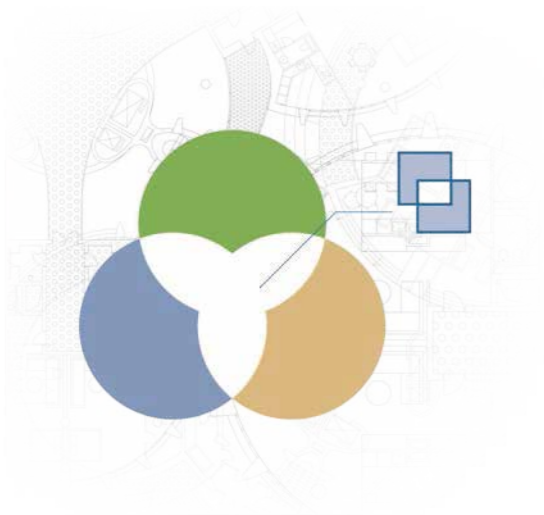
Lock Up Drawing

Lock up the selection with a password so that it is visible but uneditable



Overkill

Delete duplicates or partially overlapped objects

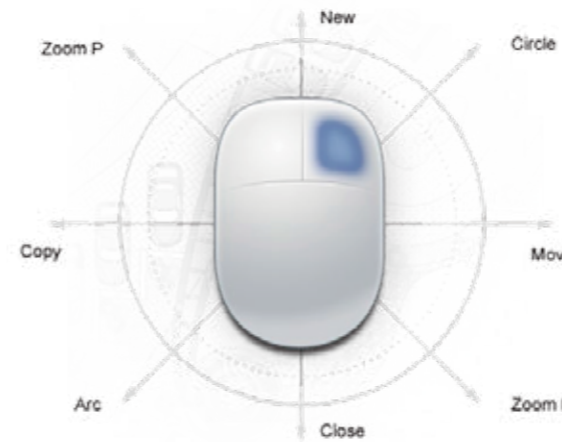


10

Micro Innovation

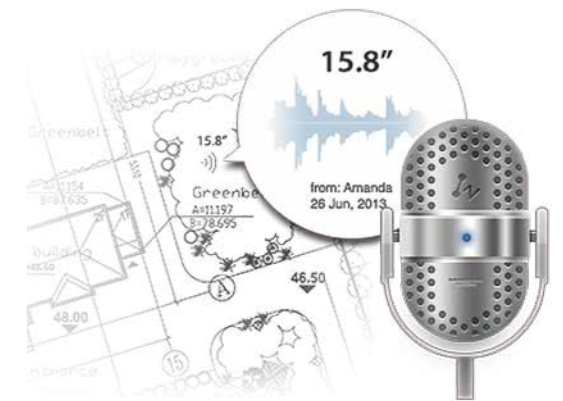
SmartMouse

Trigger commands by mouse gesture



SmartVoice

Mark with voice annotation



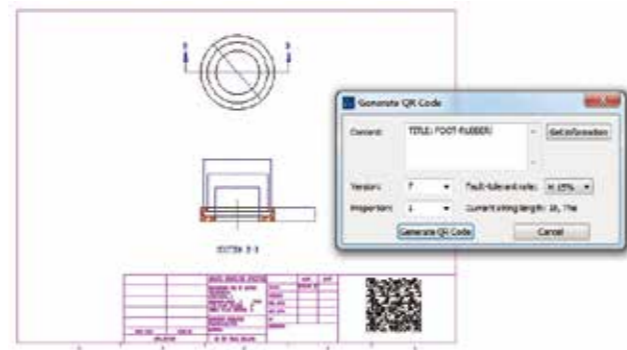
SmartSelect

Multi-filter for selection



Barcode & QR Code

Convert text information as barcode or QR code and embed in the drawing



Lightweight

Smaller installation package and quicker start. Less memory usage and lower requirement on hardware

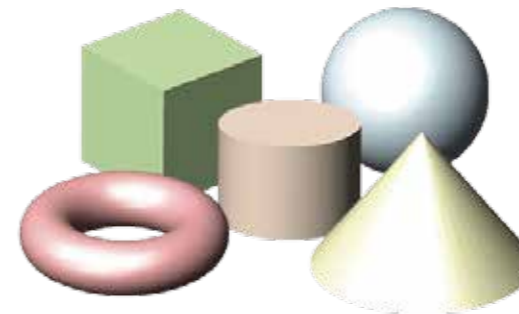


12

3D Modeling

Modeling

Create and modify 3D model with solid, surface and mesh modeling tools



Visualizing

Set visual style like wireframe, hidden and shade, get a photorealistic view with rendering



Viewing

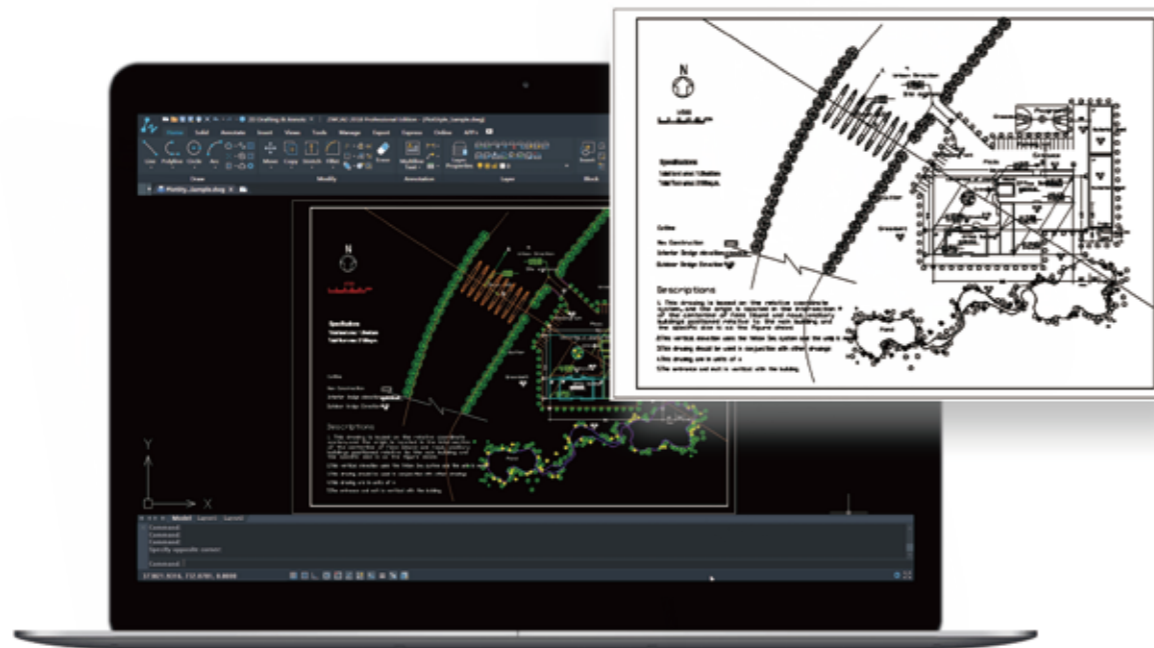
View freely with 3D Orbit, and get offset or perspective view with camera target simulation



13

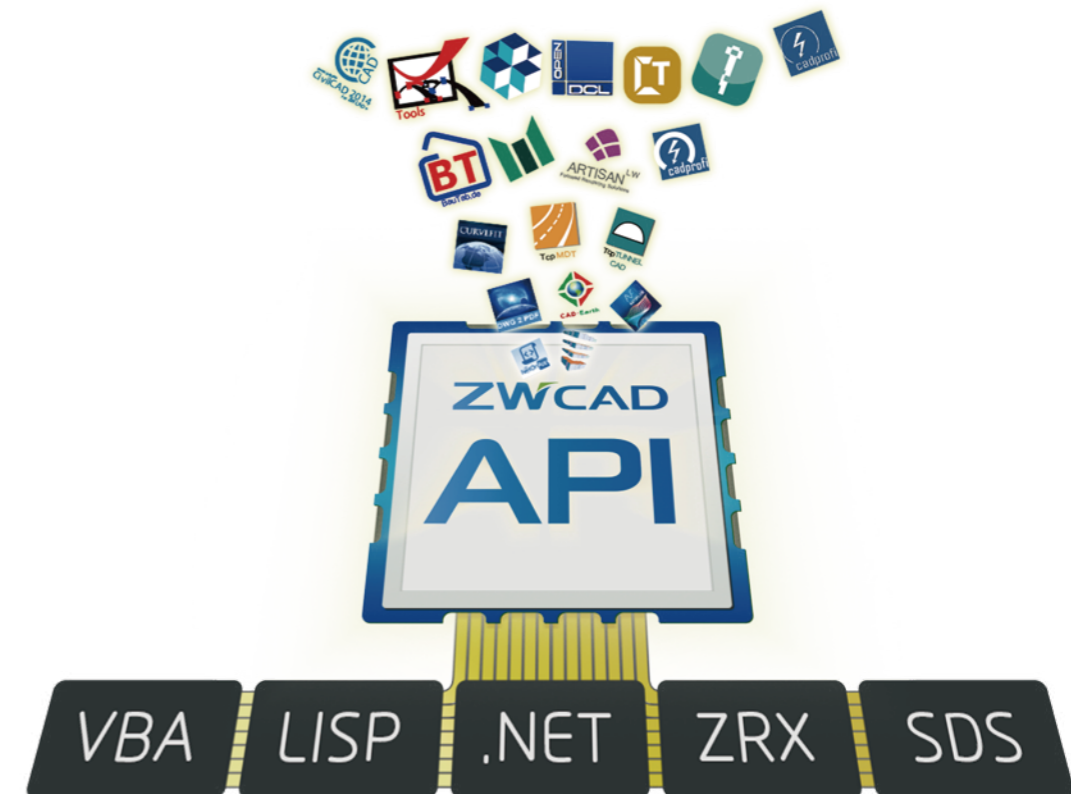
Output & Share

- **Print with STB/CTB plot style**
Assign how things print such as color, lineweight and linetype etc
- **Print or publish in other formats**
Output DWG drawings to other formats for sharing



Industry Solutions

- Code-level compatible API, easy to migrate



From Desktop To Mobile

- ZWCAD provides a mobile solution – CAD Pockets, with which you can freely work on your desktop and on the go.



ZWCAD vs ACAD

		ZWCAD		ACAD	
		Std	Pro	LT	Full
Compatibility	Compatible with DWG/DXF	•	•	•	•
	Import DGN	•	•	•	•
Interface	Classic and Ribbon interfaces	•	•	•	•
	Customize user interface (CUI)	•	•	•	•
	Tool Palettes	•	•	•	•
	Properties Palette	•	•	•	•
	Auto-complete Command Entry	•	•	•	•
	Drawing tab switching	•	•	•	•
	Adaptive Grid	•	•	•	•
			•	•	•
Annotation	Leader & MLeader	•	•	•	•
	Associative Dimension	•	•	•	•
	Text and MText	•	•	•	•
	Revcloud	•	•	•	•
	Text in-place editing	•	•	•	•
	Hatch/Gradient Hatch	•	•	•	•
	Super Hatch	•	•	•	•
	Tables & Table styles	•	•	•	•
Layer	Field	•	•	•	•
	Layer Properties Manager	•	•	•	•
	Layer Filter	•	•	•	•
Xref, Block and Attribute	Layer State Manager	•	•	•	•
	OLE	•	•	•	•
	Raster Images	•	•	•	•
	Xrefs in-place editing	•	•	•	•
	Multiple block inserting	•	•	•	•
3D	Block Attribute Manager	•	•	•	•
	Solid, surface, and mesh modeling	•	•	•	•
	Photorealistic rendering	•	•	•	•
	Visual Style	•	•	•	•
	ACIS viewing	•	•	•	•
Programming	3D Orbit	•	•	•	•
	MNU, MNS and MNL file support	•	•	•	•
	ActiveX API	•	•	•	•
	LISP support	•	•	•	•
	Visual Basic for Applications (VBA)	•	•	•	•
Output	Runtime extension (ZRX/ARX)	•	•	•	• (ARX)
	.NET	•	•	•	•
	CTB & STB Plot Style	•	•	•	•
Innovation	Plotting	•	•	•	•
	Publish to PDF	•	•	•	•
	Export	•	•	•	•
Others	eTransmit	•	•	•	•
	SmartMouse	•	•	•	•
	SmartVoice	•	•	•	•
	SmartSelect	•	•	•	•
	Barcode & QR Code	•	•	•	•
	File Compare	•	•	•	•
	Quick Calculator	•	•	•	•
	Selection Preview	•	•	•	•
	Match Property	•	•	•	•
	Group	•	•	•	•
Quick Select	•	•	•	•	
Others	Multiline and multiline style	•	•	•	•
	Region	•	•	•	•
	Multiple Undo/Redo	•	•	•	•
	Undo/Redo Preview	•	•	•	•
	Parametric Drawing	•	•	•	•
	Express tools	•	•	•	•
			•	•	•

• Supported

See How CAD Experts & Users Comment On ZWCAD



• **Ralph Grabowski** | Managing Editor of Tenlinks.com

"I sometimes consult on compatibility for competitors to Autodesk, and from this I have a collection of tough drawing with which test DWG files. Here ZWCAD scored excellent, displaying every test drawing correctly."



• **William Forty** | CAD Expert in Mechanical and Civil Engineering

"I have never seriously considered changing my application to an alternative, but with the impressive compatibility and development API, and its product quality, I will most certainly be considering ZWCAD, when I want to upgrade next."



• **Francisco Silva** | Engineering Designer

"ZWCAD has impressed me with its ease-of-use and accessibility to files. It's pretty intuitive and has all processes guiding users how to use the tools."



• **Daniel Dobrzynsk** | Certificated Autodesk Trainer

"Should a reduction in the processing time of drawings be important, then the new tools in ZWCAD like SmartVoice, dynamic blocks, and CUI will be a great contribution."



• **Ray Howard** | CEO of CAD2BIM

"With the combination of ease of use, DWG native format, feature rich commands, user interface, and affordable price point of ZWCAD, it's looking like I may have just turned the corner and freed myself from an old way of thinking."



• **Joris Maes** | Experienced AutoCAD Designer

"The drawings are perfectly compatible in ZWCAD. I have made changes in drawings and saved them in ZWCAD, which were made in AutoCAD, and vice versa. Besides, AutoCAD.NET applications can be easily used in ZWCAD."

